

DAMAC




CANAL
HEIGHTS

de GRISOGONO

FLOOR PLANS

A CENTURIES-OLD
TREASURE TRANSFORMED.





FLOOR PLANS

STUDIO

TYPES A1 - A18

- ST-A18
- ST-A17
- ST-A16
- ST-A15
- ST-A14
- ST-A13
- ST-A12
- ST-A11
- ST-A9,A10
- ST-A6,A7,A8
- ST-A3,A4,A5
- ST-A2



LEVELS 2-19

STUDIO

TYPES A1 M - A18 M

- ST-A18M
- ST-A17M
- ST-A16M
- ST-A15M
- ST-A14M
- ST-A13M
- ST-A12M
- ST-A11M
- ST-A9M,A10M
- ST-A6M,A7M,A8M
- ST-A3M,A4M,A5M
- ST-A2M



LEVELS 2-19

STUDIO

TYPES B1 - B18

- ST-B7, B8
- ST-B9
- ST-B10, B11, B12
- ST-B13, B14
- ST-B15, B16
- ST-B17, B18
- ST-B6
- ST-B5
- ST-B4
- ST-B3
- ST-B2



LEVELS 2-19

STUDIO

TYPES B1 M - B18 M

- ST-B7M, B8M
- ST-B9M
- ST-B10M, B11M, B12M
- ST-B13M, B14M
- ST-B15M, B16M
- ST-B17M, B18M
- ST-B6M
- ST-B5M
- ST-B4M
- ST-B3M
- ST-B2M



LEVELS 2-19

STUDIO

TYPES C1 - C18

STUDIO

TYPES C1 M - C18 M

- ST-C1,C2
- ST-C3,C4,C5,C6
- ST-C7
- ST-C8
- ST-C9
- ST-C10,C11
- ST-C12,C13
- ST-C14
- ST-C15
- ST-C16
- ST-C17
- ST-C18



- ST-C1M,C2M
- ST-C3M,C4M,C5M,C6M
- ST-C7M
- ST-C8M
- ST-C9M
- ST-C10M,C11M
- ST-C12M,C13M
- ST-C14M
- ST-C15M
- ST-C16M
- ST-C17M
- ST-C18M



CANAL HEIGHTS BY DE GRISOGONO

CANAL HEIGHTS BY DE GRISOGONO



LEVELS 2-19



LEVELS 2-19

STUDIO

TYPES D1 - D18

STUDIO

TYPES D1 M - D18 M

- ST-D1, D2, D3
- ST-D4, D5, D6
- ST-D7, D8, D9
- ST-D10
- ST-D11
- ST-D12
- ST-D13
- ST-D14
- ST-D15
- ST-D16
- ST-D17
- ST-D18



- ST-D1M, D2M, D3M
- ST-D4M, D5M, D6M
- ST-D7M, D8M, D9M
- ST-D10M
- ST-D11M
- ST-D12M
- ST-D13M
- ST-D14M
- ST-D15M
- ST-D16M
- ST-D17M
- ST-D18M



CANAL HEIGHTS BY DE GRISOONO

CANAL HEIGHTS BY DE GRISOONO



LEVELS 2-19



LEVELS 2-19

STUDIO

TYPES E1 - E18

STUDIO

TYPES E1 M - E18 M

- ST-E2
- ST-E3
- ST-E4
- ST-E5
- ST-E6, E7, E8
- ST-E9, E10, E11
- ST-E12, E13, E14
- ST-E15
- ST-E16
- ST-E17
- ST-E18



- ST-E2M
- ST-E3M
- ST-E4M
- ST-E5M
- ST-E6M, E7M, E8M
- ST-E9M, E10M, E11M
- ST-E12M, E13M, E14M
- ST-E15M
- ST-E16M
- ST-E17M
- ST-E18M



CANAL HEIGHTS BY DE GRISOONO

CANAL HEIGHTS BY DE GRISOONO



LEVELS 2-19



LEVELS 2-19

STUDIO

TYPES F1 - F5



LEVELS 27-31

STUDIO

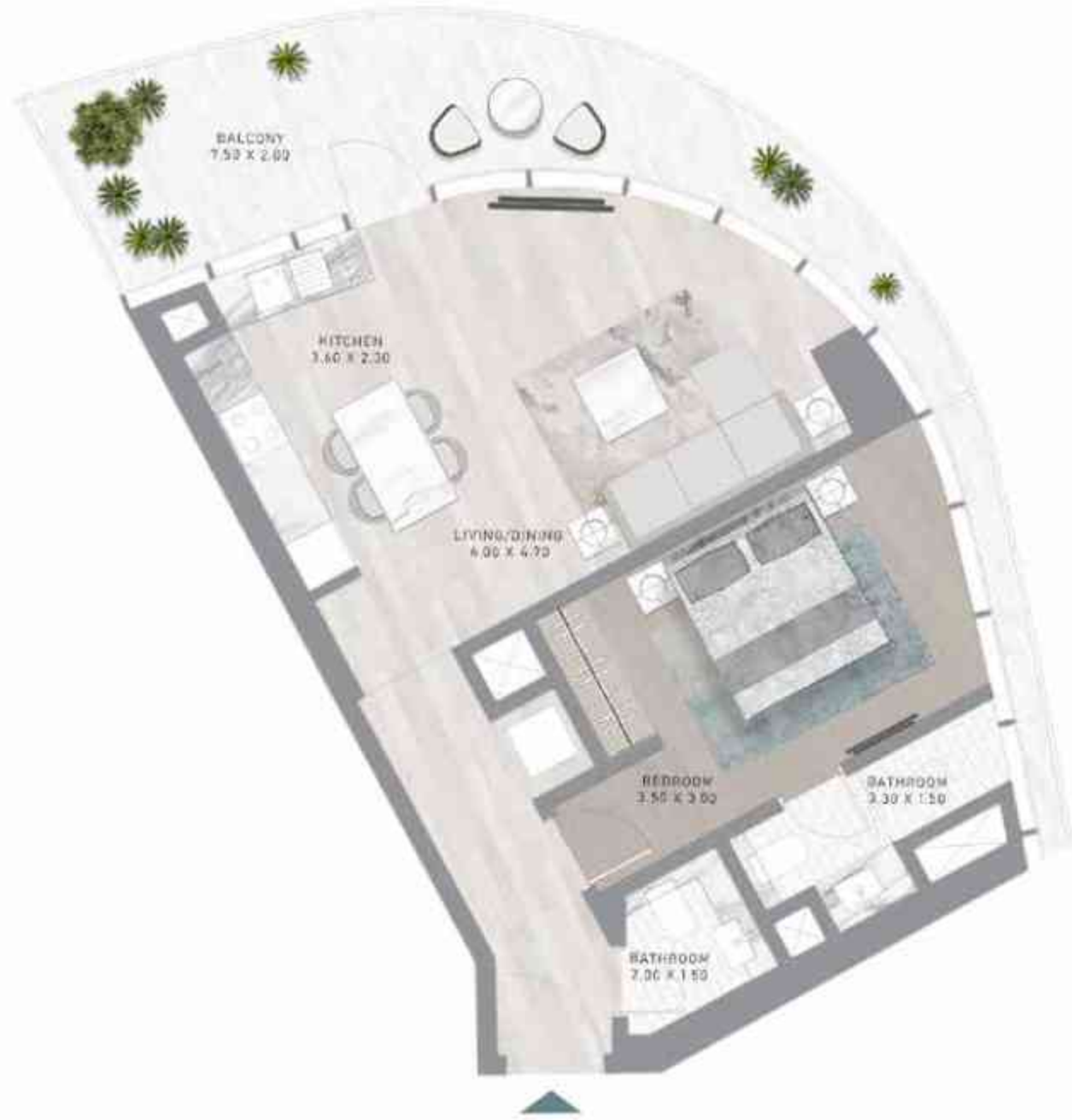
TYPES F1 M - F5 M



LEVELS 27-31

1-BEDROOM

TYPE A1



LEVEL 2

1-BEDROOM

TYPE A1-M



LEVEL 2

1-BEDROOM

TYPE A2



LEVEL 3

1-BEDROOM

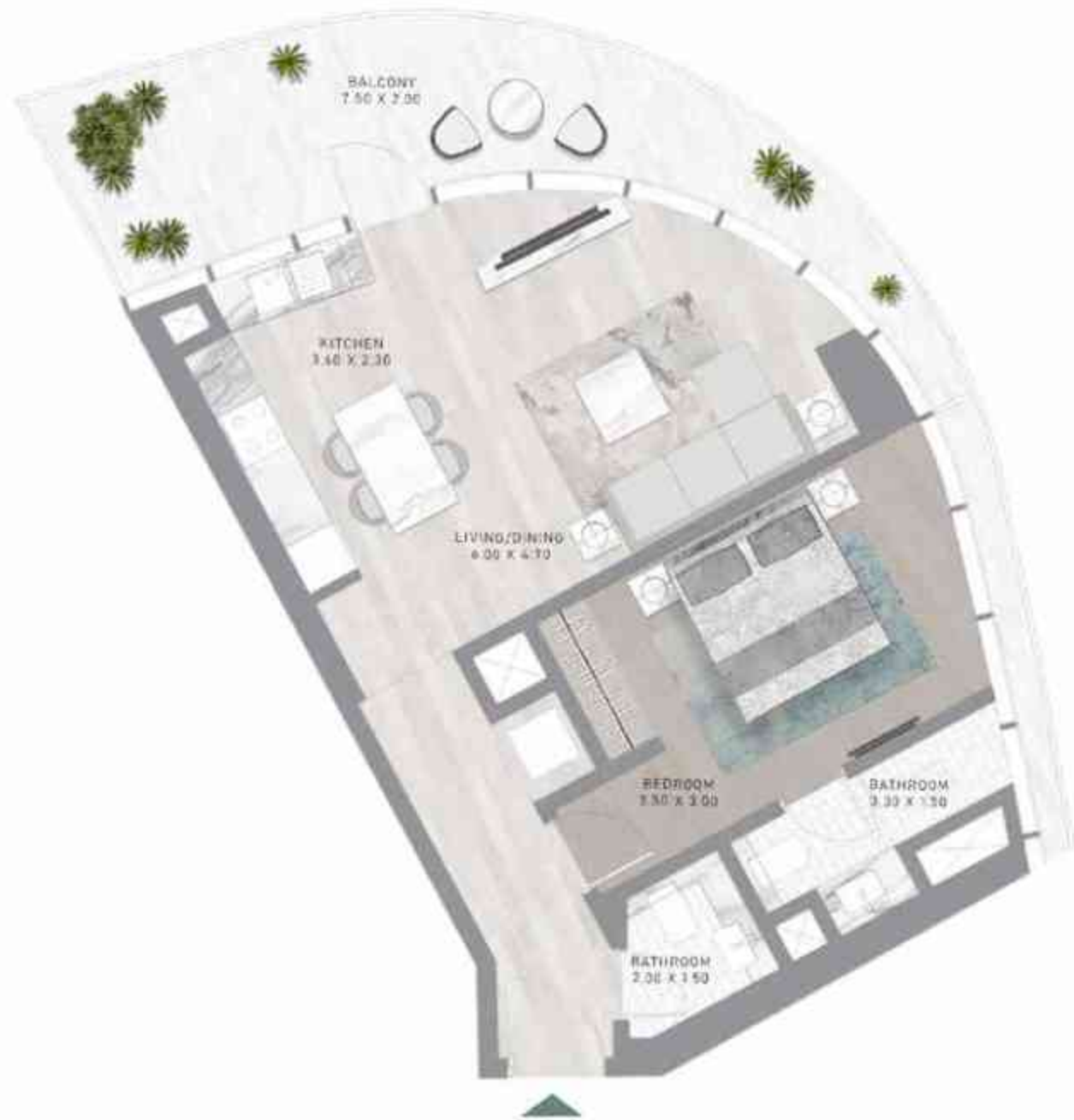
TYPE A2-M



LEVEL 3

1-BEDROOM

TYPE A3



LEVEL 4

1-BEDROOM

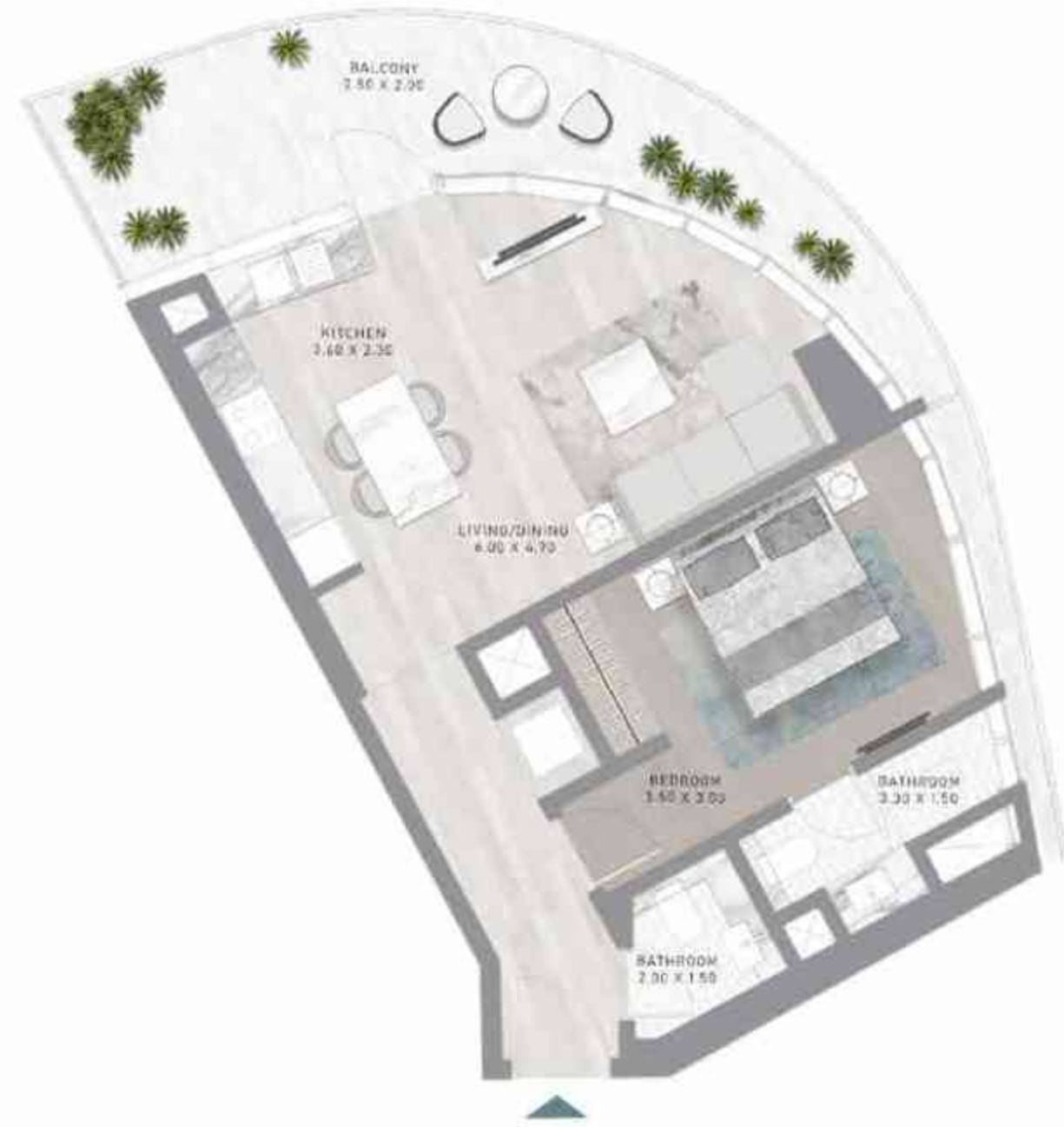
TYPE A3-M



LEVEL 4

1-BEDROOM

TYPE A4



LEVEL 5

1-BEDROOM

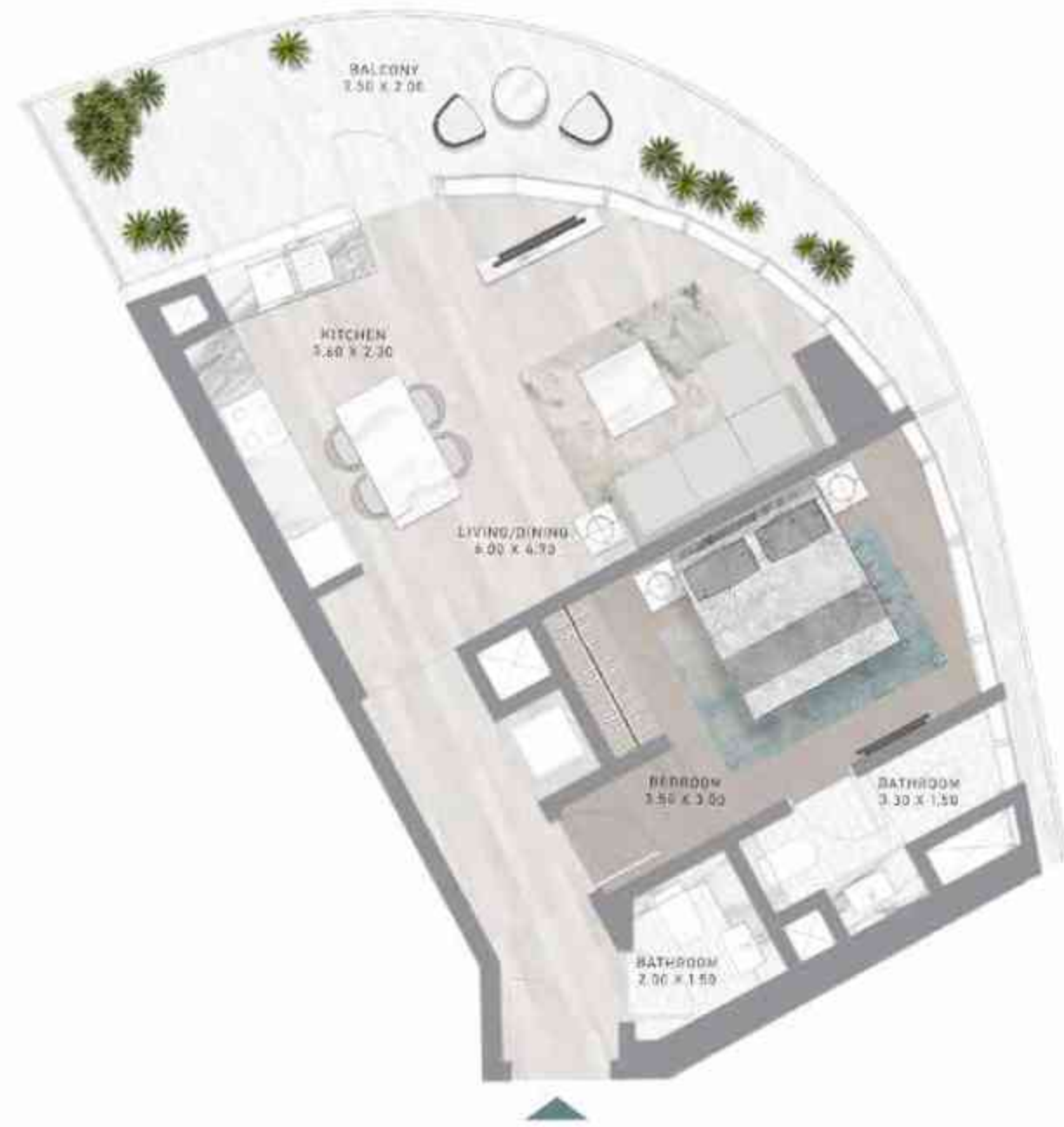
TYPE A4-M



LEVEL 5

1-BEDROOM

TYPE A5



LEVEL 6

1-BEDROOM

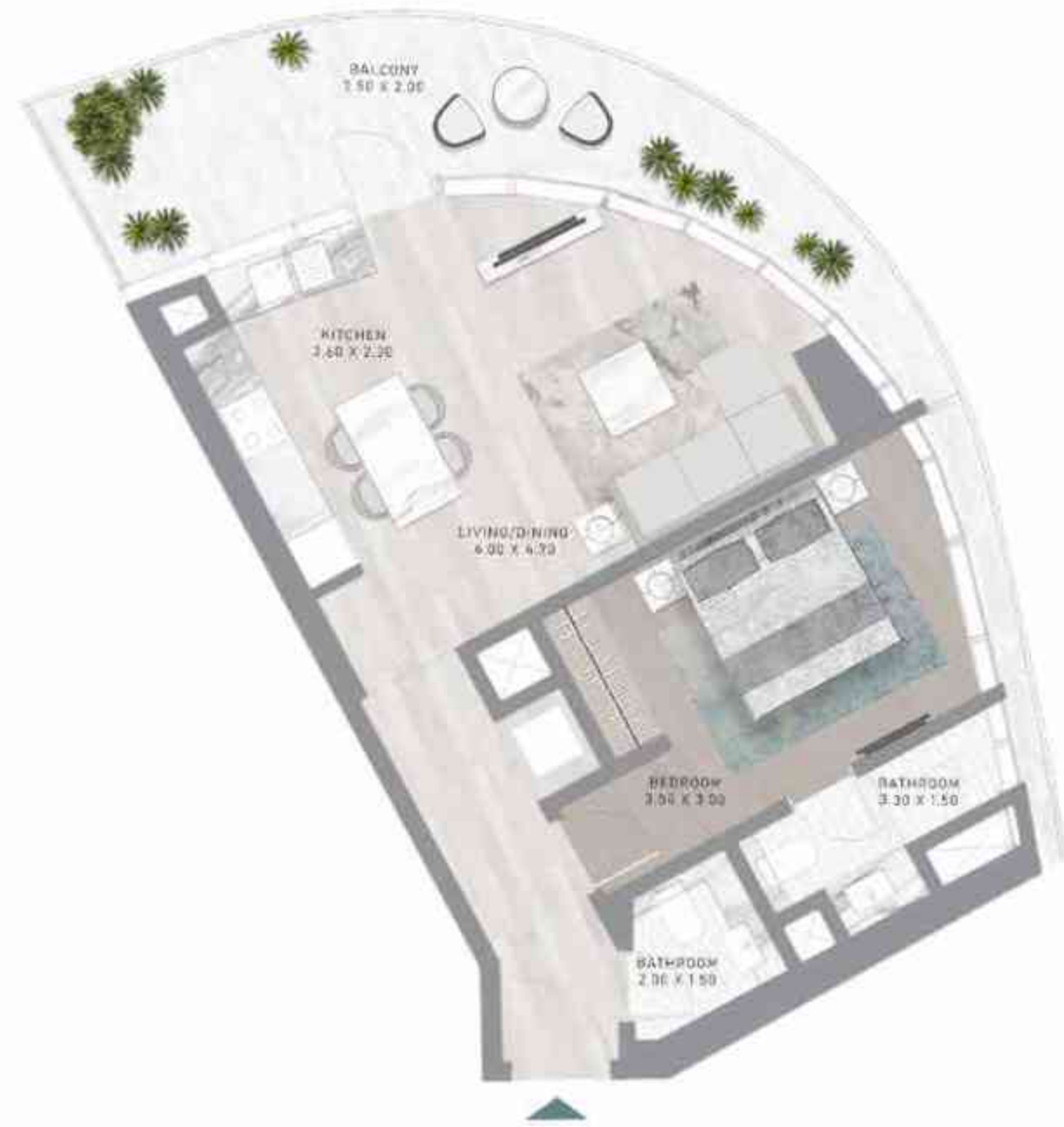
TYPE A5-M



LEVEL 6

1-BEDROOM

TYPE A6



LEVEL 7

1-BEDROOM

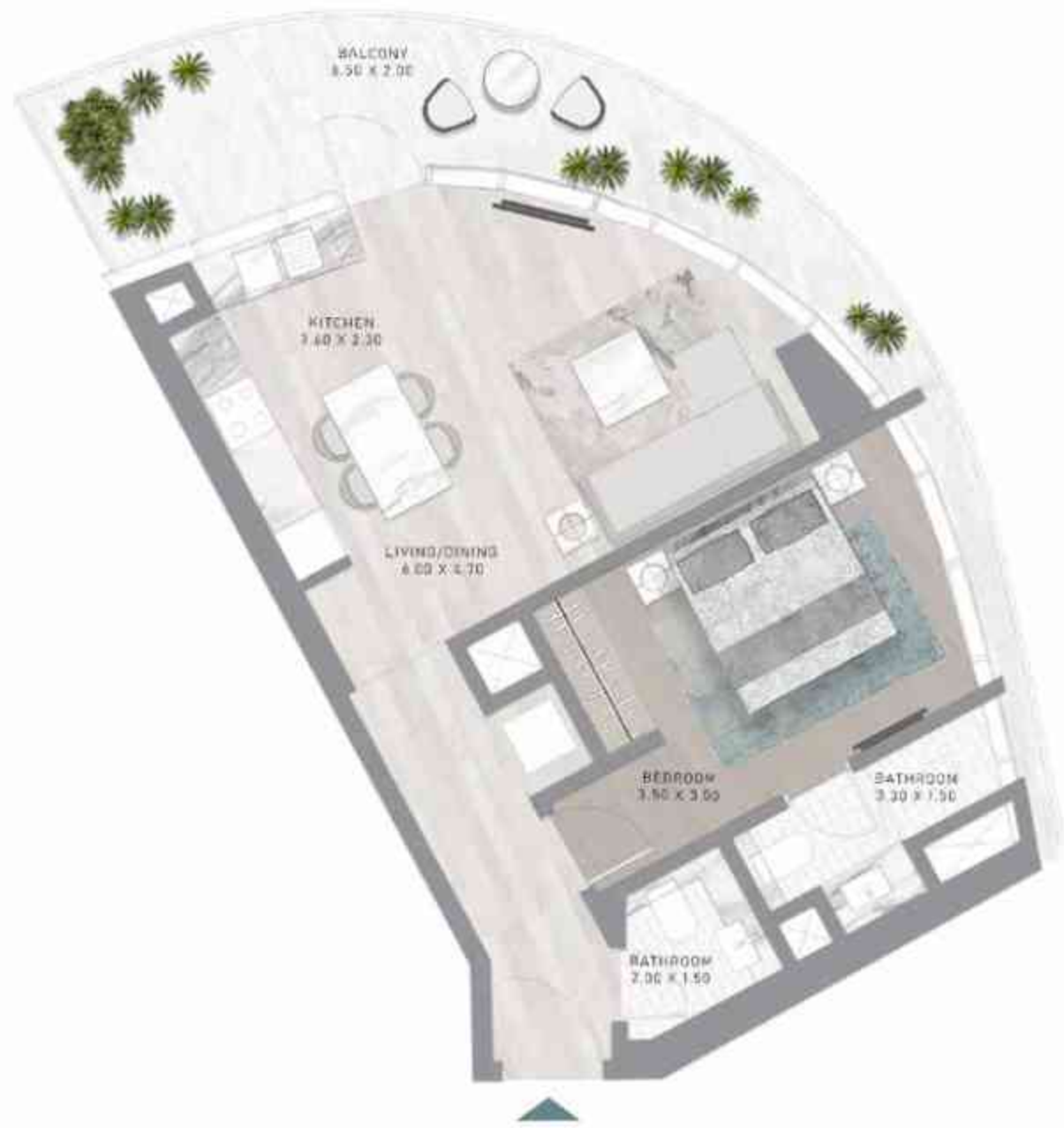
TYPE A6-M



LEVEL 7

1-BEDROOM

TYPE A7



LEVEL 8

1-BEDROOM

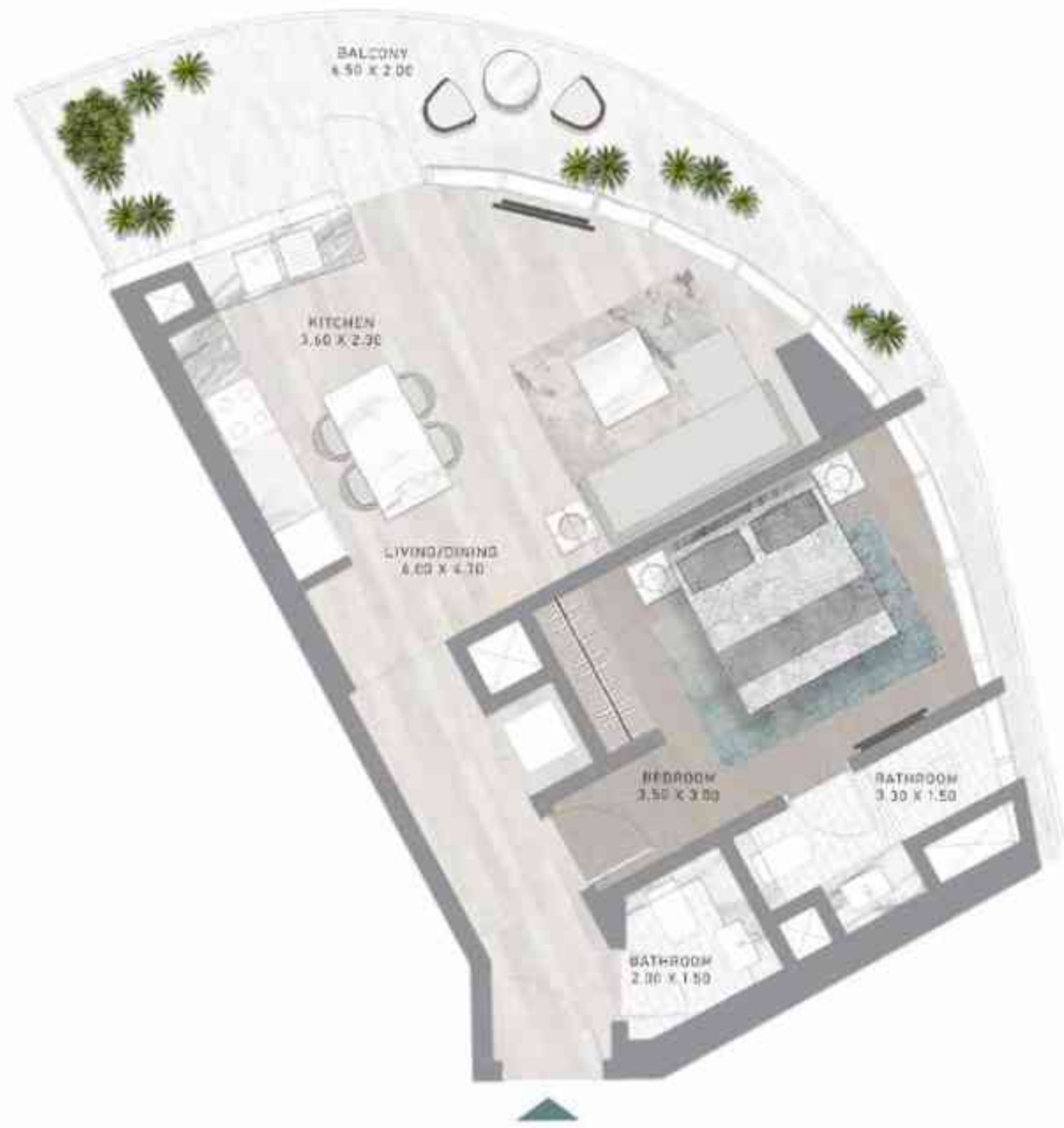
TYPE A7-M



LEVEL 8

1-BEDROOM

TYPE A8



LEVEL 9

1-BEDROOM

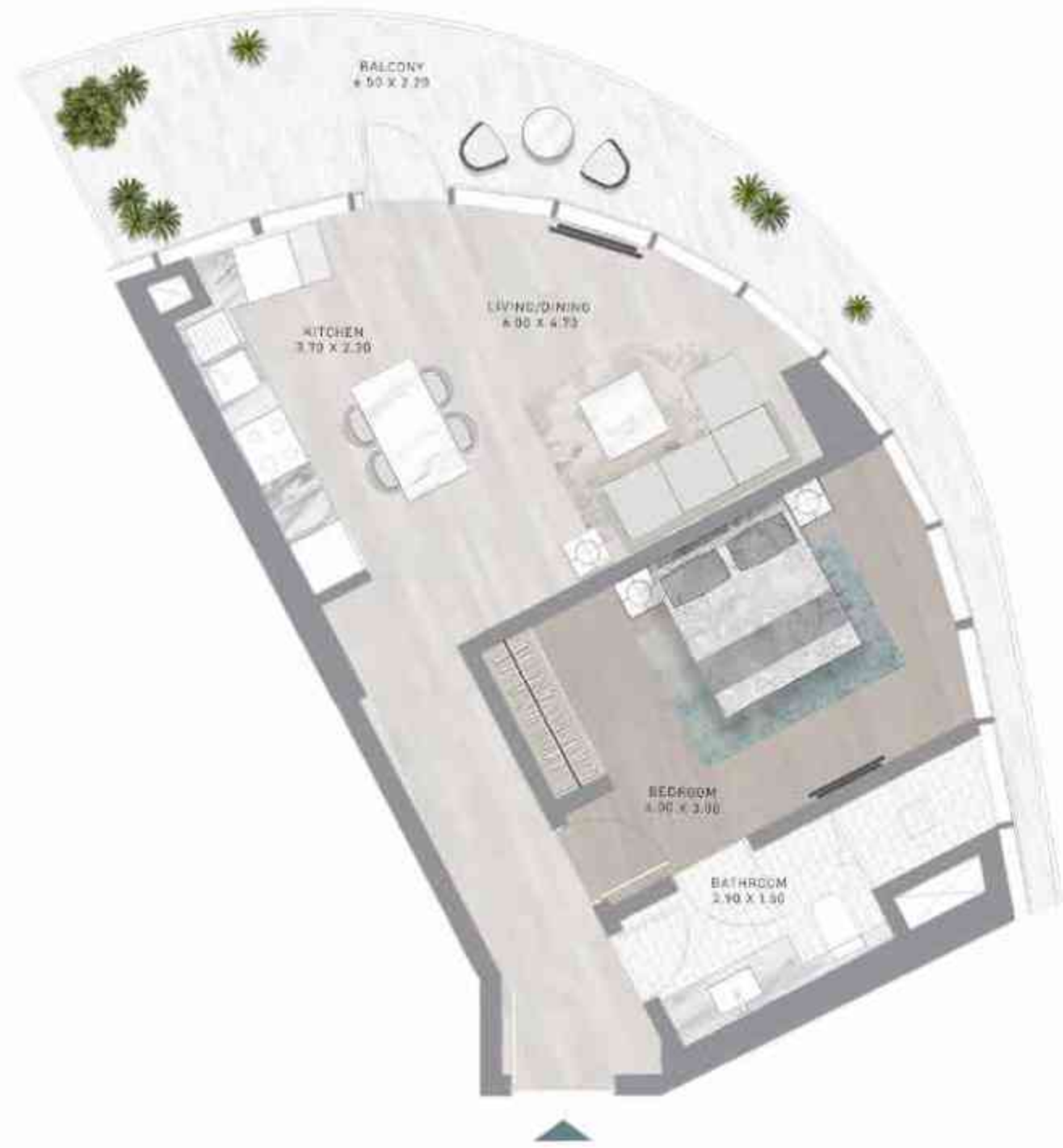
TYPE A8-M



LEVEL 9

1-BEDROOM

TYPE A9



LEVEL 10

1-BEDROOM

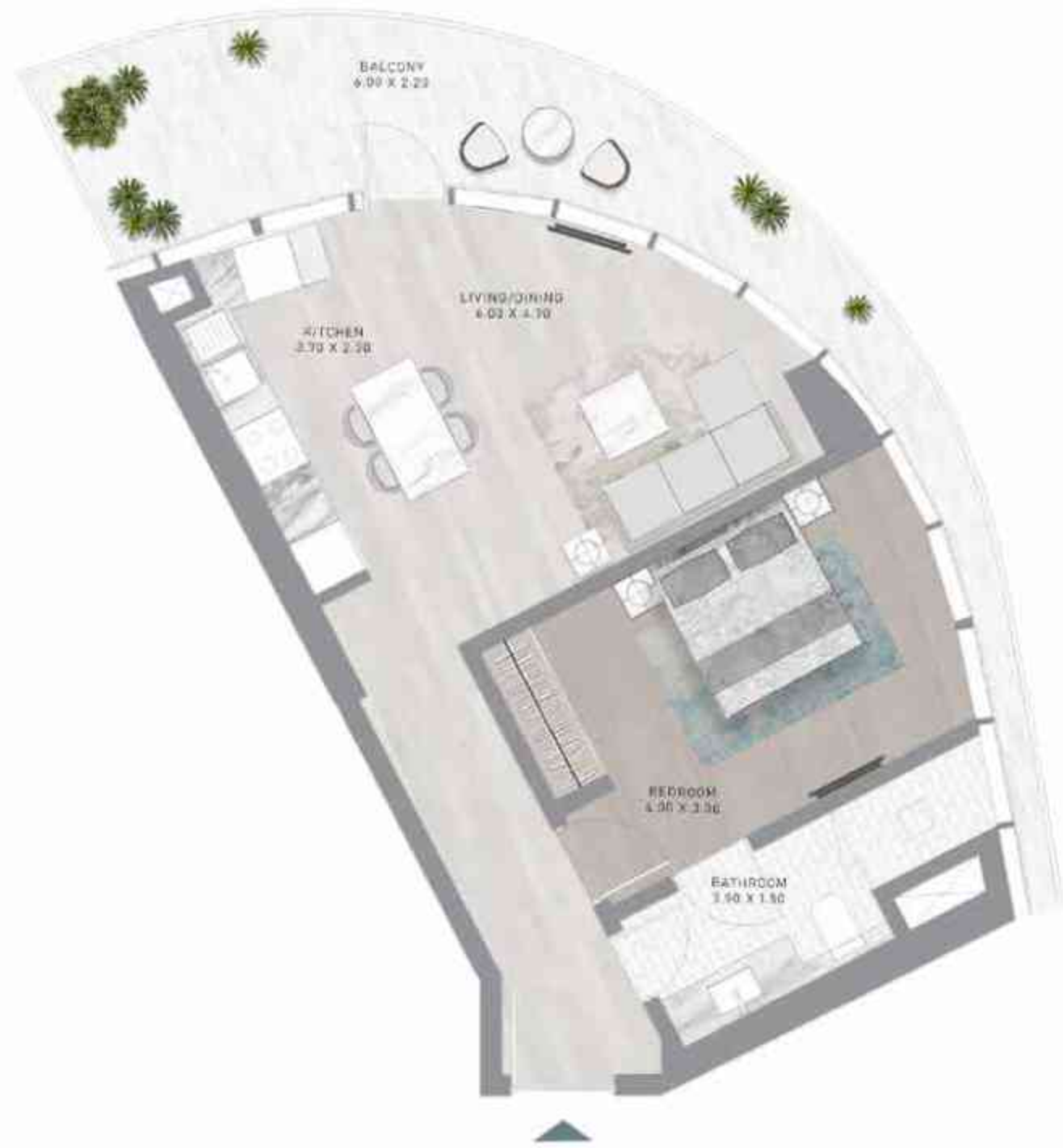
TYPE A9-M



LEVEL 10

1-BEDROOM

TYPE A10



LEVEL 11

1-BEDROOM

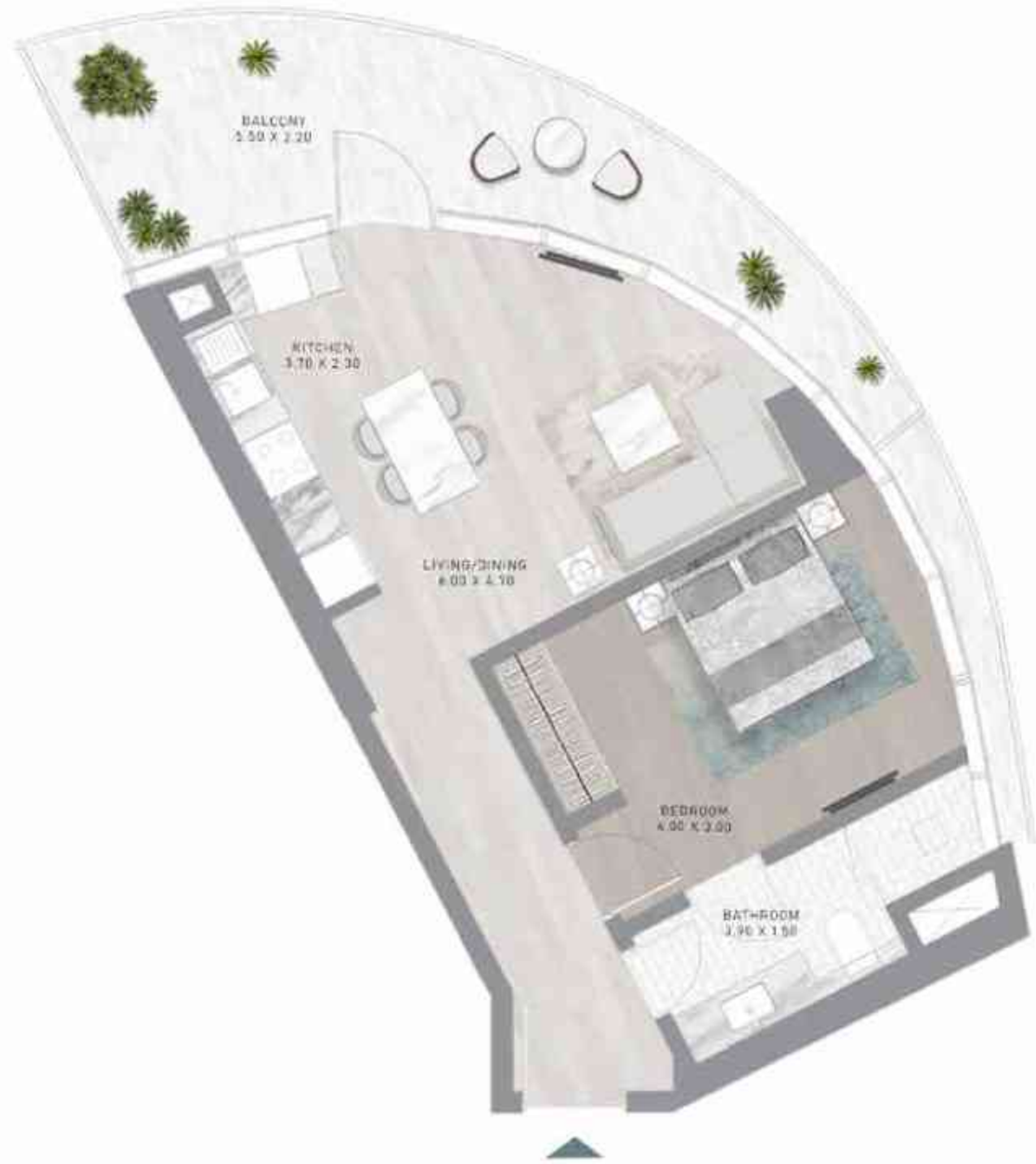
TYPE A10-M



LEVEL 11

1-BEDROOM

TYPE A11



LEVEL 12

1-BEDROOM

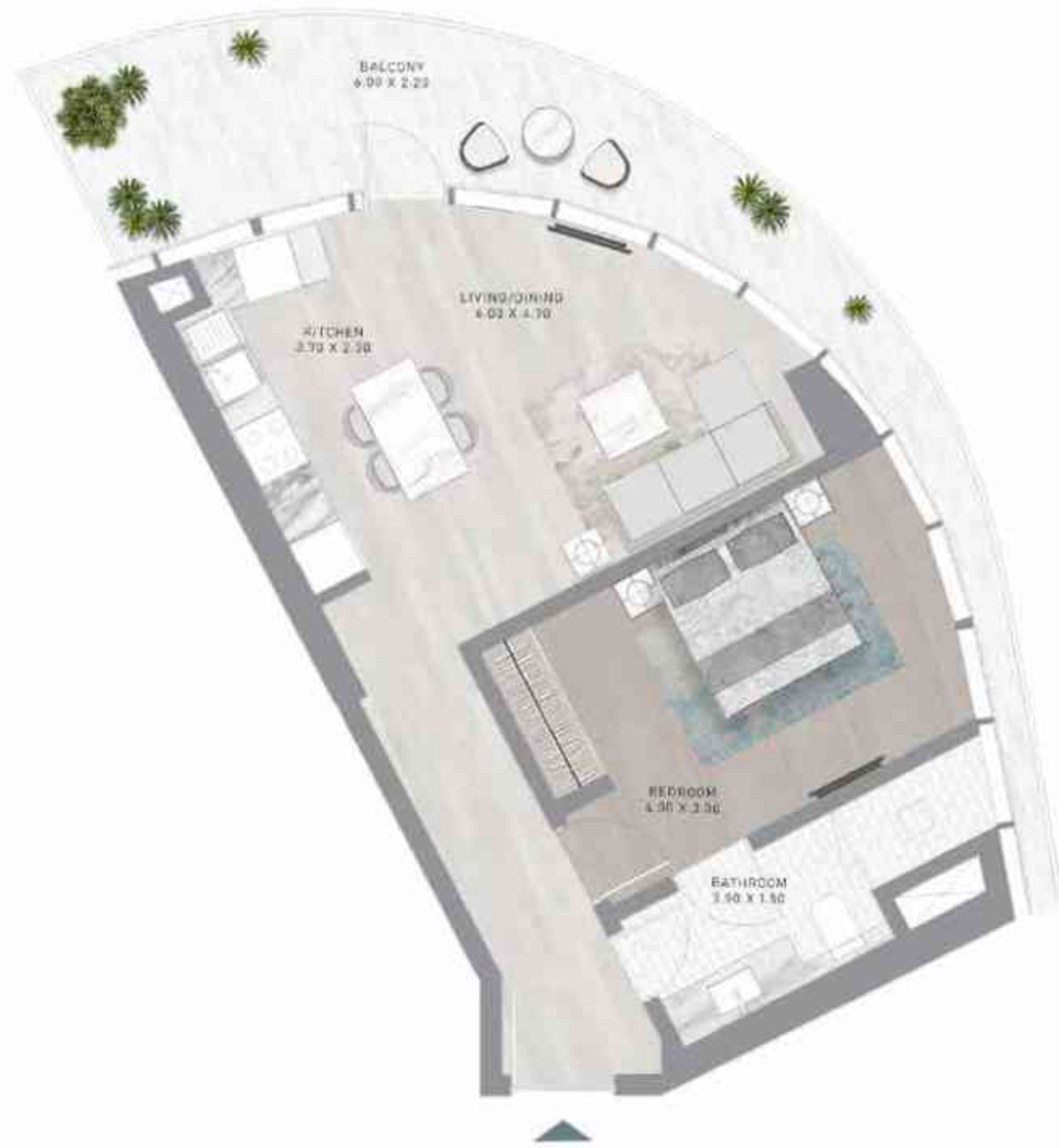
TYPE A11-M



LEVEL 12

1-BEDROOM

TYPE A12



LEVEL 13

1-BEDROOM

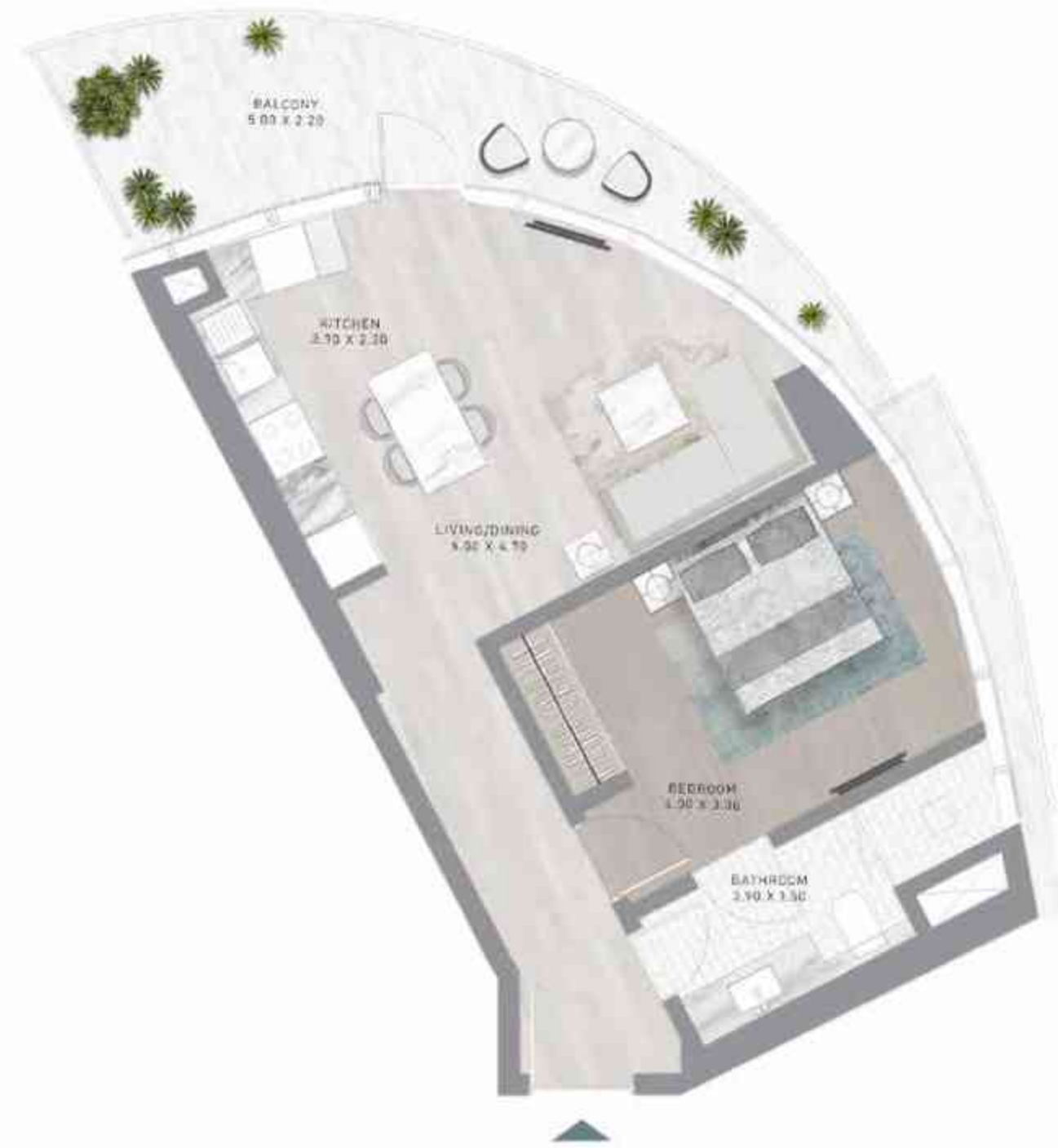
TYPE A12-M



LEVEL 13

1-BEDROOM

TYPE A13



LEVEL 14

1-BEDROOM

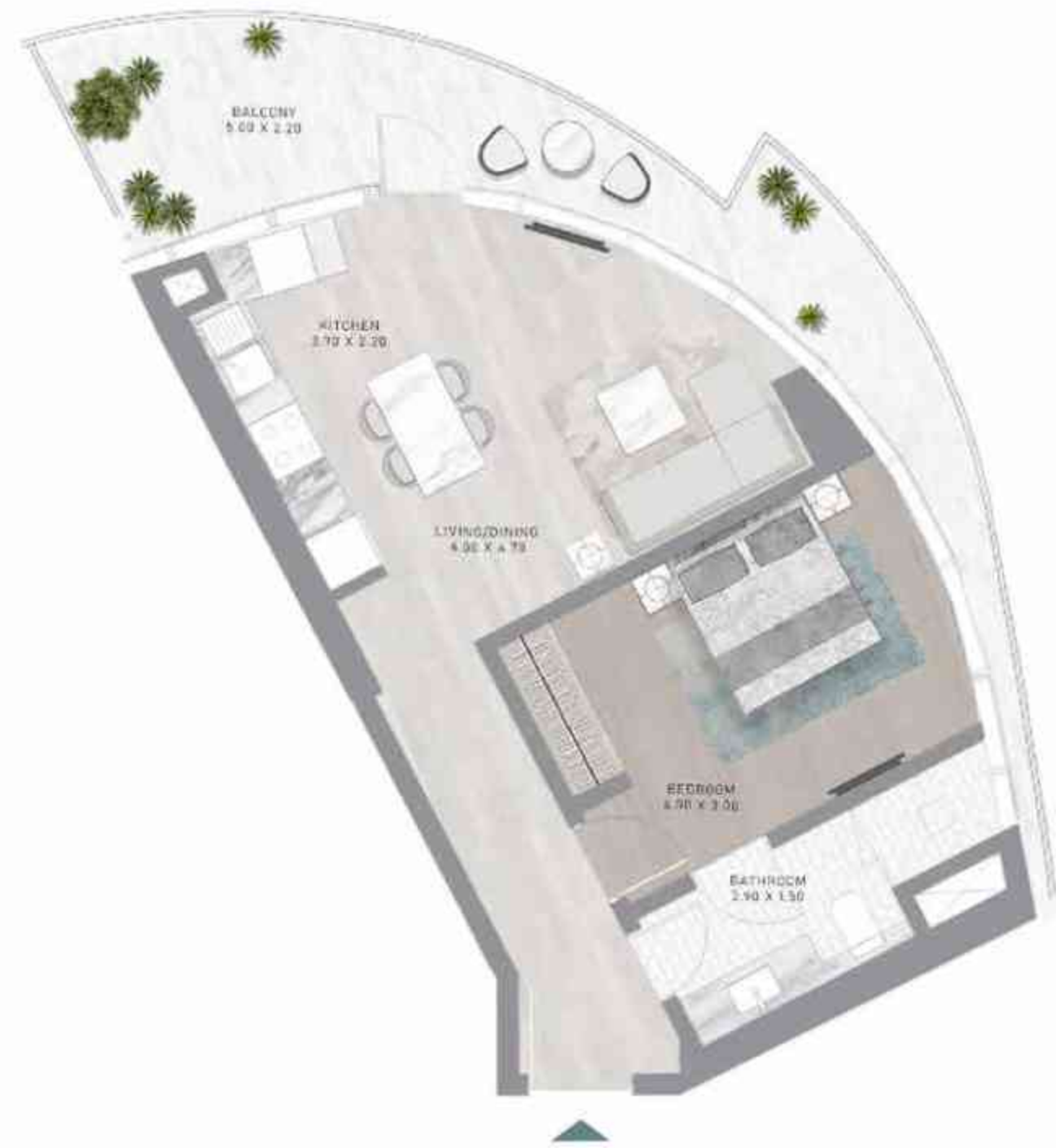
TYPE A13-M



LEVEL 14

1-BEDROOM

TYPE A14



LEVEL 15

1-BEDROOM

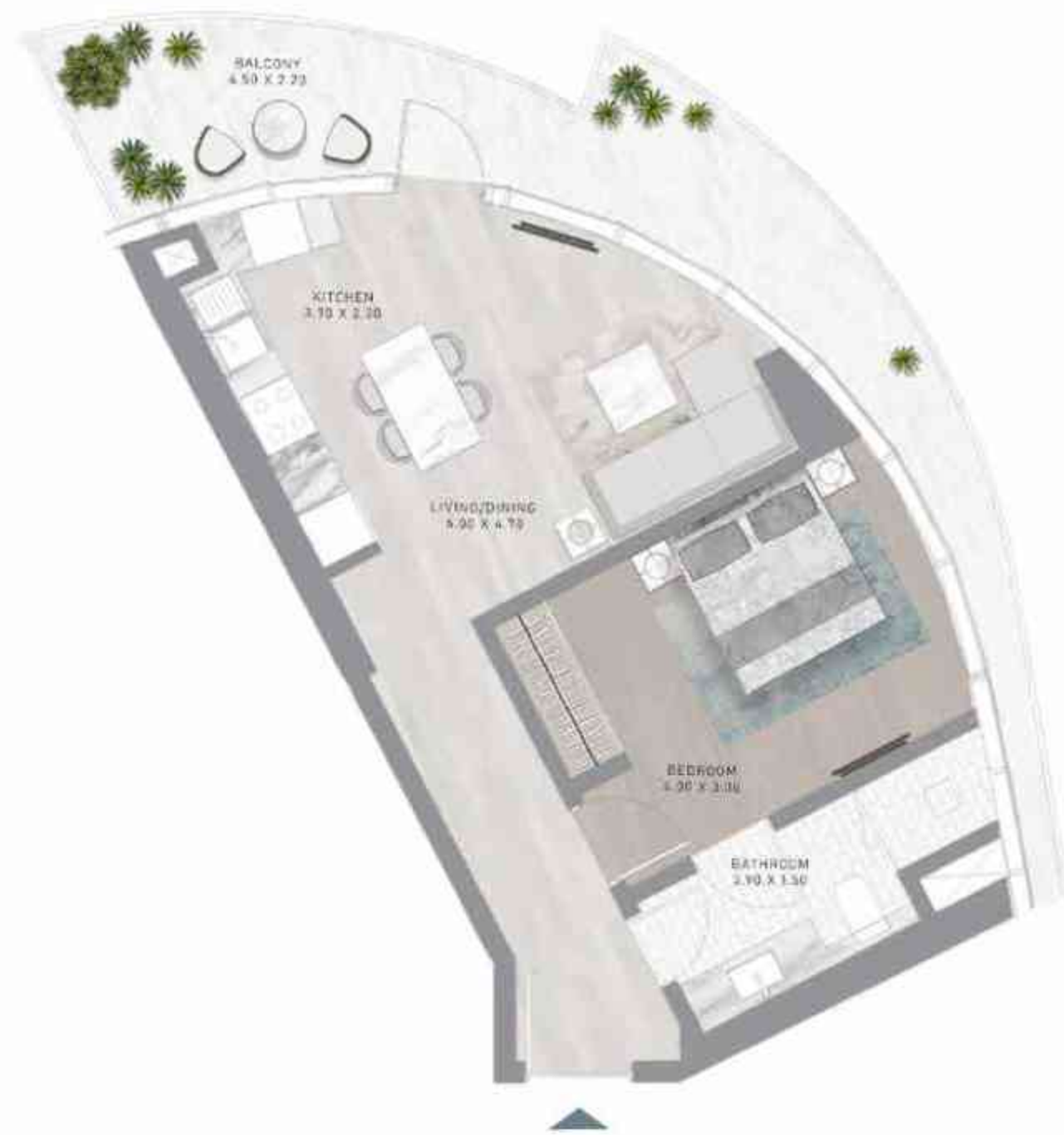
TYPE A14-M



LEVEL 15

1-BEDROOM

TYPE A15



LEVEL 16

1-BEDROOM

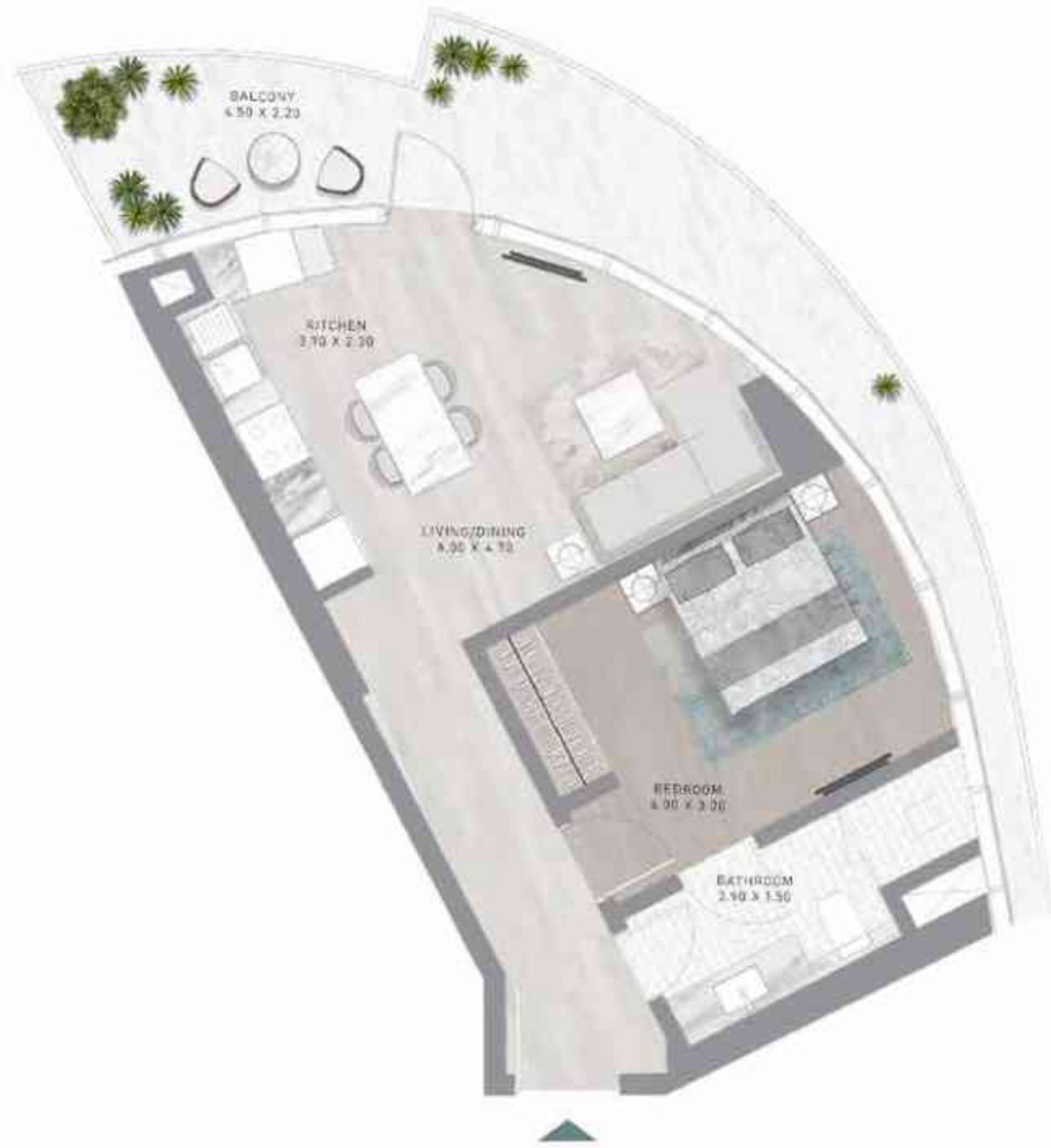
TYPE A15-M



LEVEL 16

1-BEDROOM

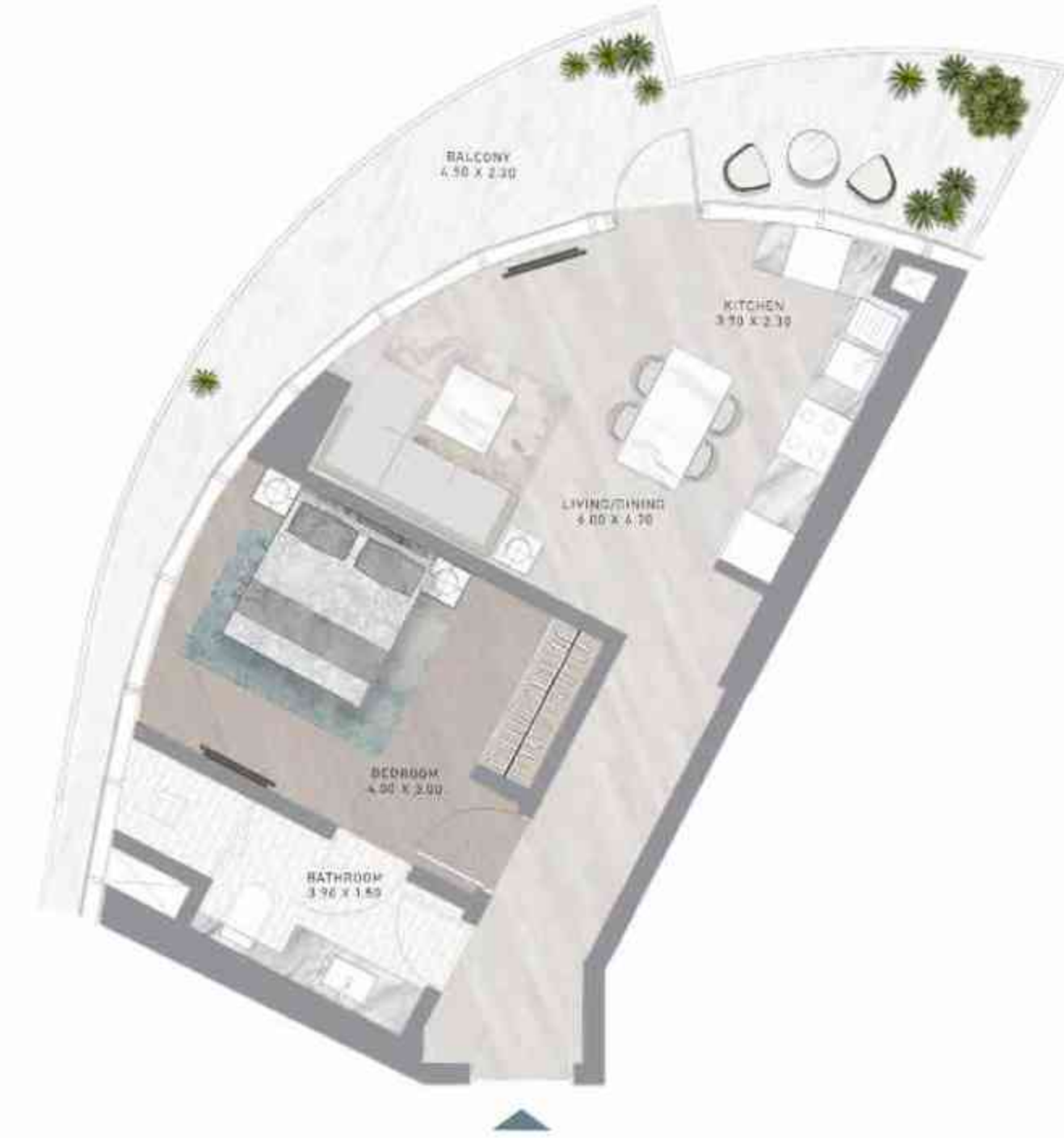
TYPE A16



LEVEL 17

1-BEDROOM

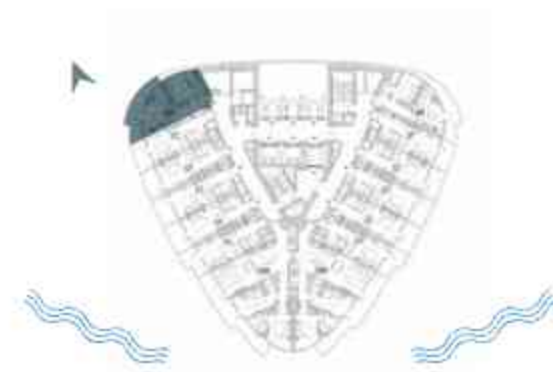
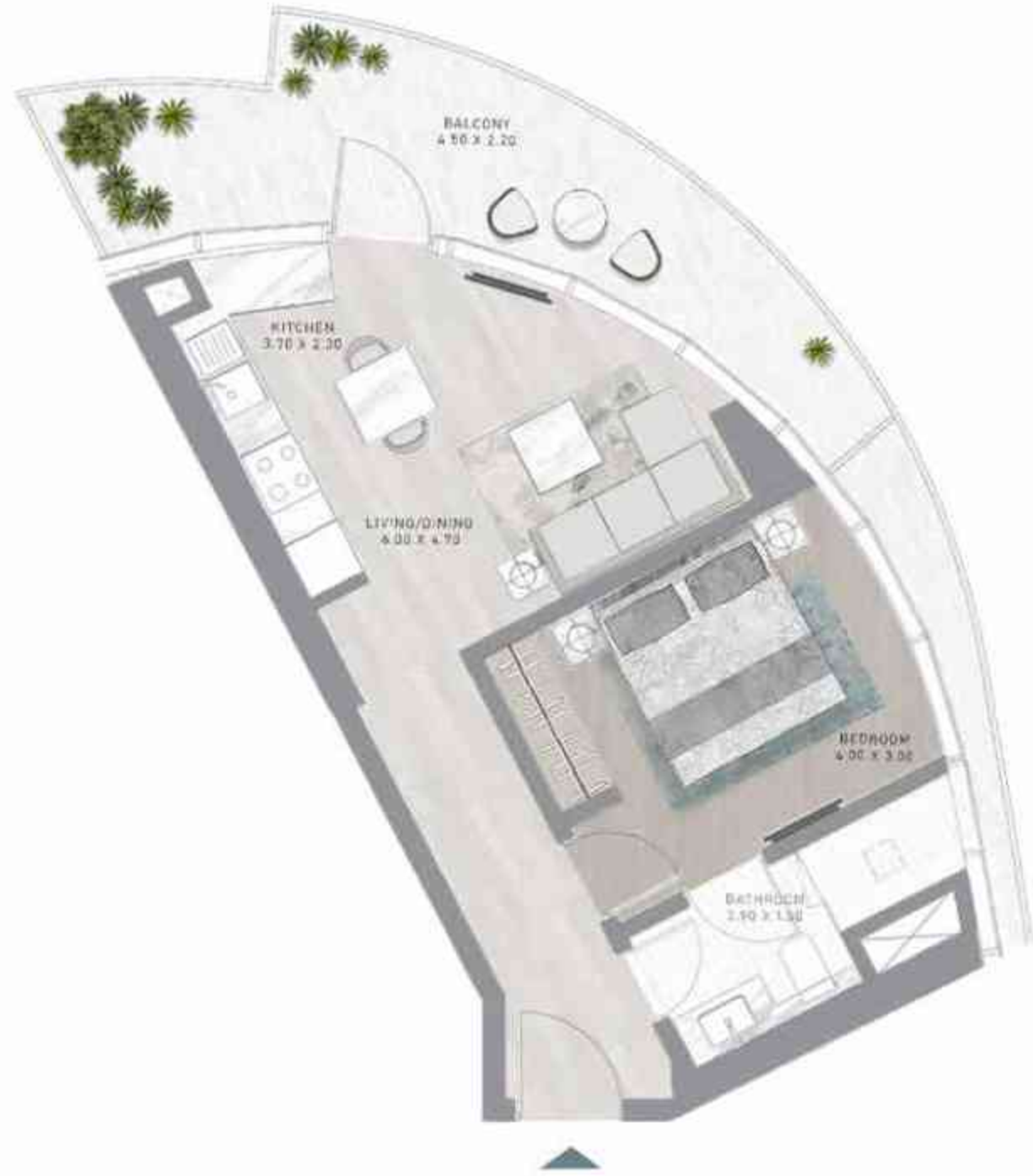
TYPE A16-M



LEVEL 17

1-BEDROOM

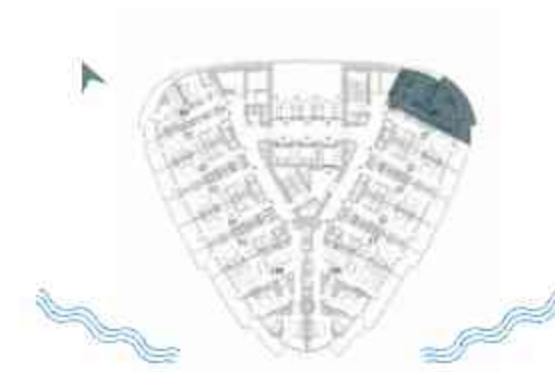
TYPE A17



LEVEL 18

1-BEDROOM

TYPE A17-M



LEVEL 18

1-BEDROOM

TYPE A18



LEVEL 19

1-BEDROOM

TYPE A18-M



LEVEL 19

1-BEDROOM

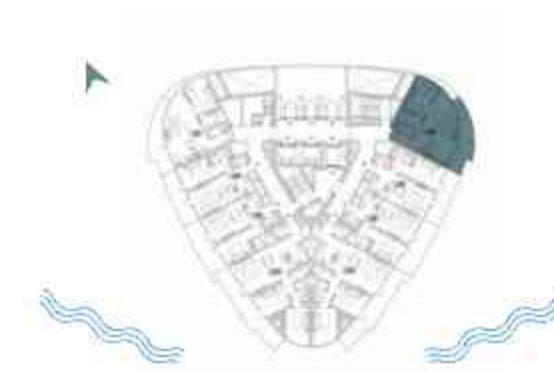
TYPE B1



LEVEL 21

1-BEDROOM

TYPE B1-M



LEVEL 21

1-BEDROOM

TYPE B2



LEVEL 22

1-BEDROOM

TYPE B2-M



LEVEL 22

1-BEDROOM

TYPE B3



LEVEL 23

1-BEDROOM

TYPE B3-M



LEVEL 23

1-BEDROOM

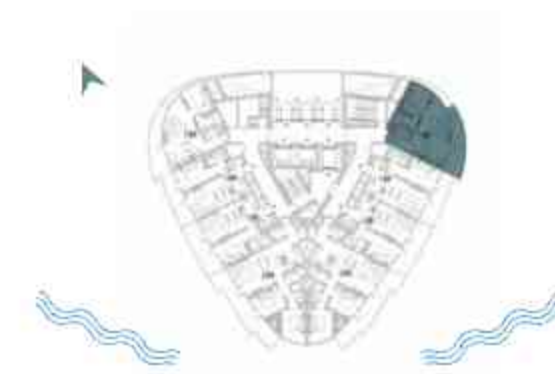
TYPE B4



LEVEL 24

1-BEDROOM

TYPE B4-M



LEVEL 24

1-BEDROOM

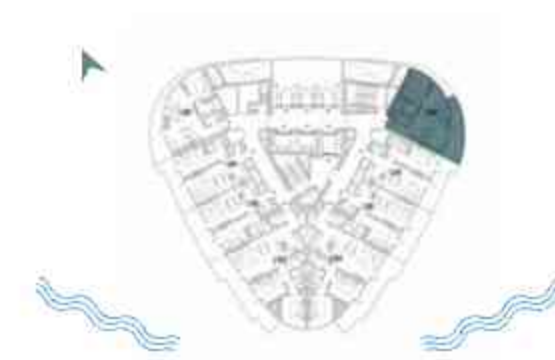
TYPE B5



LEVEL 25

1-BEDROOM

TYPE B5-M



LEVEL 25

1-BEDROOM

TYPE B6



LEVEL 26

1-BEDROOM

TYPE B6-M



LEVEL 26

1-BEDROOM

TYPES C1 - C5



LEVELS 21-25

1-BEDROOM

TYPES C1 M - C5 M



LEVELS 21-25

1-BEDROOM

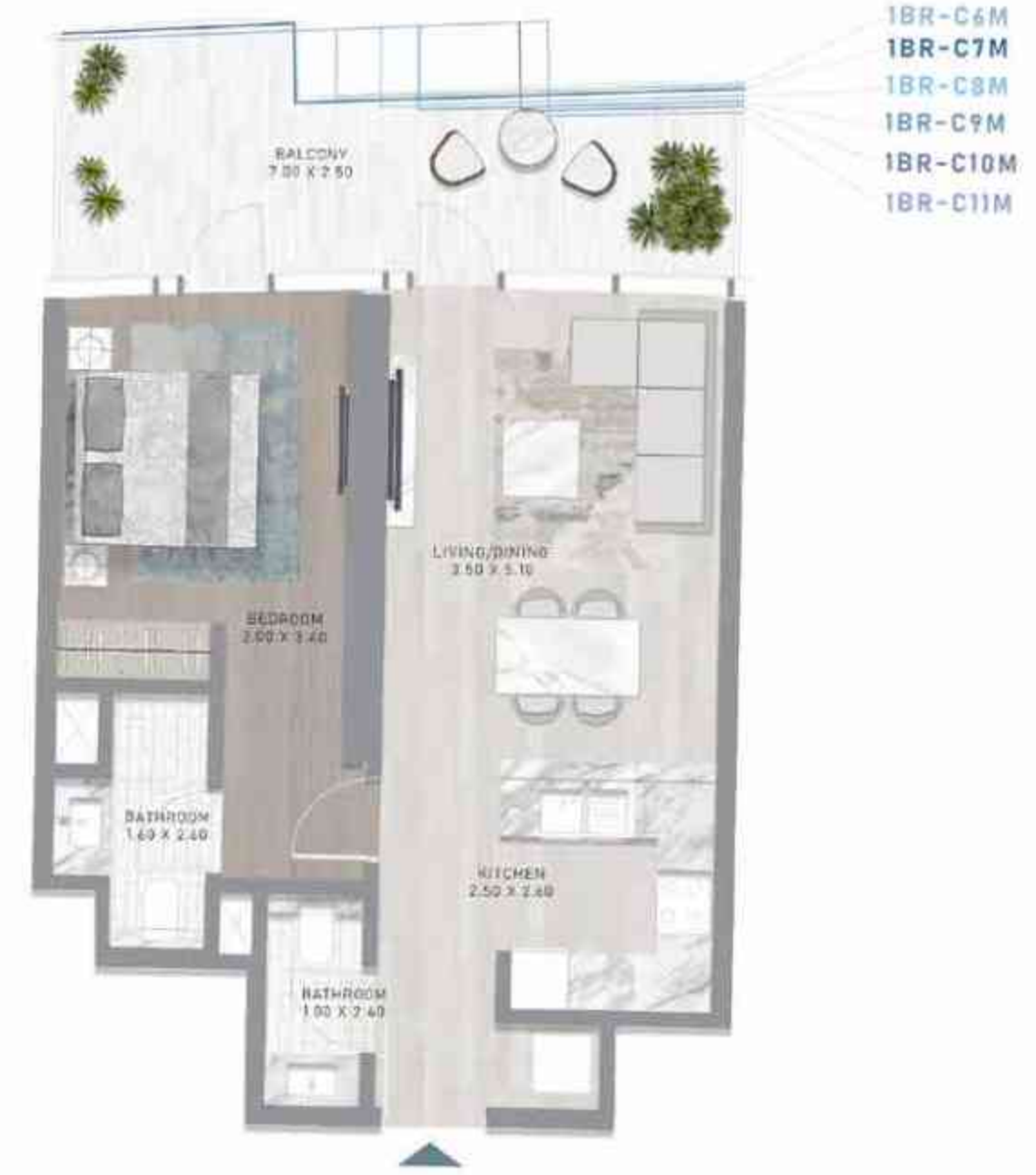
TYPES C6 - C11



LEVELS 26-31

1-BEDROOM

TYPES C6 M - C11 M



LEVELS 26-31

1-BEDROOM

TYPES D1 - D6



LEVELS 21-26

1-BEDROOM

TYPES D1 M - D6 M



LEVELS 21-26

1-BEDROOM

TYPE E1



LEVEL 27

1-BEDROOM

TYPE E1-M



LEVEL 27

1-BEDROOM

TYPE E2



LEVEL 28

1-BEDROOM

TYPE E2-M



LEVEL 28

1-BEDROOM

TYPE E3



LEVEL 29

1-BEDROOM

TYPE E3-M



LEVEL 29

1-BEDROOM

TYPE E4



LEVEL 30

1-BEDROOM

TYPE E4-M



LEVEL 30

1-BEDROOM

TYPE E5



LEVEL 31

1-BEDROOM

TYPE E5-M



LEVEL 31

1-BEDROOM

TYPE G1



LEVEL 32

1-BEDROOM

TYPE G1-M



LEVEL 32

1-BEDROOM

TYPE G2



LEVEL 33

1-BEDROOM

TYPE G2-M



LEVEL 33

1-BEDROOM

TYPE G3



LEVEL 34

1-BEDROOM

TYPE G3-M



LEVEL 34

1-BEDROOM

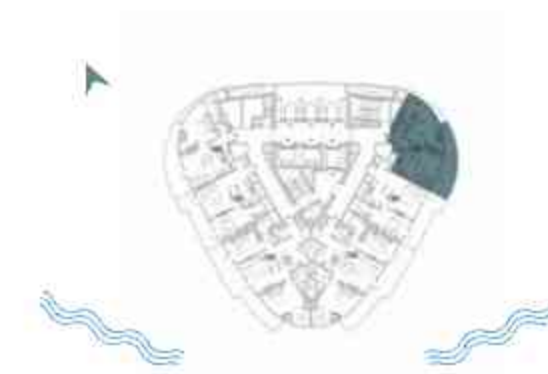
TYPE G4



LEVEL 35

1-BEDROOM

TYPE G4-M



LEVEL 35

1-BEDROOM

TYPE G5



LEVEL 36

1-BEDROOM

TYPE G5-M



LEVEL 36

1-BEDROOM

TYPE G6



LEVEL 37

1-BEDROOM

TYPE G6-M



LEVEL 37

1-BEDROOM

TYPE G7



LEVEL 38

1-BEDROOM

TYPE G7 M



LEVEL 38

1-BEDROOM

TYPES H1 - H7

1-BEDROOM

TYPES H1 M - H7 M



CANAL HEIGHTS BY DE GRISOGONO

CANAL HEIGHTS BY DE GRISOGONO



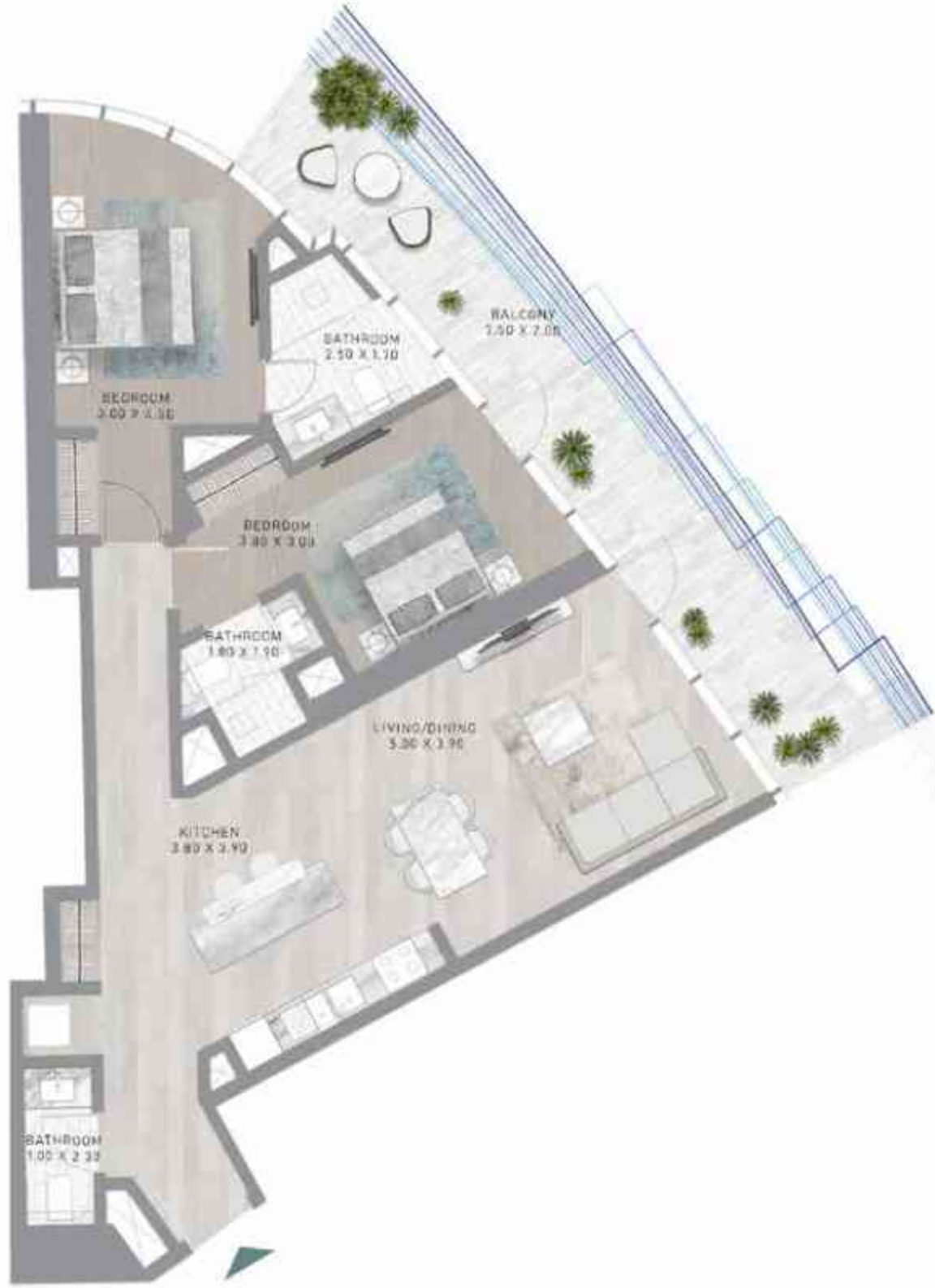
LEVELS 32-38



LEVELS 32-38

2-BEDROOM

TYPES A1 - A18



- 2BR-A2
- 2BR-A3
- 2BR-A4
- 2BR-A5
- 2BR-A6,A7
- 2BR-A8,A9
- 2BR-A10,A11,A12,A13
- 2BR-A14,A15,A16
- 2BR-A17,A18



LEVELS 2-19

2-BEDROOM

TYPES A1 M - A18 M



- 2BR-A2M
- 2BR-A3M
- 2BR-A4M
- 2BR-A5M
- 2BR-A6M,A7M
- 2BR-A8M,A9M
- 2BR-A10M,A11M,A12M,A13M
- 2BR-A14M,A15M,A16M
- 2BR-A17M,A18M



LEVELS 2-19

2-BEDROOM

TYPE B1



LEVEL 21

2-BEDROOM

TYPE B1-M



LEVEL 21

2-BEDROOM

TYPE B2



LEVEL 22

2-BEDROOM

TYPE B2-M



LEVEL 22

2-BEDROOM

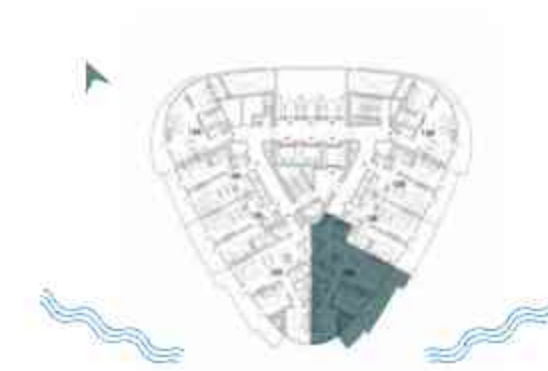
TYPE B3



LEVEL 23

2-BEDROOM

TYPE B3-M



LEVEL 23

2-BEDROOM

TYPE B4



LEVEL 24

2-BEDROOM

TYPE B4-M



LEVEL 24

2-BEDROOM

TYPE B5



LEVEL 25

2-BEDROOM

TYPE B5-M



LEVEL 25

2-BEDROOM

TYPE B6



LEVEL 26

2-BEDROOM

TYPE B6-M



LEVEL 26

2-BEDROOM

TYPE C1



LEVEL 27

2-BEDROOM

TYPE C1-M



LEVEL 27

2-BEDROOM

TYPE C2



LEVEL 28

2-BEDROOM

TYPE C2-M



LEVEL 28

2-BEDROOM

TYPE C3



LEVEL 29

2-BEDROOM

TYPE C3-M



LEVEL 29

2-BEDROOM

TYPE C4



LEVEL 30

2-BEDROOM

TYPE C4-M



LEVEL 30

2-BEDROOM

TYPE C5



LEVEL 31

2-BEDROOM

TYPE C5-M



LEVEL 31

2-BEDROOM

TYPE D1



LEVEL 32

2-BEDROOM

TYPE D1-M



LEVEL 32

2-BEDROOM

TYPE D2



LEVEL 33

2-BEDROOM

TYPE D2-M



LEVEL 33

2-BEDROOM

TYPE D3



LEVEL 34

2-BEDROOM

TYPE D3-M



LEVEL 34

2-BEDROOM

TYPE D4



LEVEL 35

2-BEDROOM

TYPE D4-M



LEVEL 35

2-BEDROOM

TYPE D5



LEVEL 36

2-BEDROOM

TYPE D5-M



LEVEL 36

2-BEDROOM

TYPE D6



LEVEL 37

2-BEDROOM

TYPE D6-M



LEVEL 37

2-BEDROOM

TYPE D7



LEVEL 38

2-BEDROOM

TYPE D7 M



LEVEL 38

DAMAC PROPERTIES

LIVE THE LUXURY

DAMAC Properties has been at the forefront of the Middle East's luxury real estate market since 2002, delivering award-winning residential, commercial and leisure properties across the region, including the UAE, Saudi Arabia, Qatar, Jordan, Lebanon, Iraq, Maldives, Canada, the United States, as well as the United Kingdom. Since then, the company has delivered approximately 42,000 homes, with a development portfolio of more than 28,000 at various stages of planning and progress.*

Joining forces with some of the world's most eminent fashion and lifestyle brands, DAMAC has brought new and exciting living concepts to the market in collaborations that include a golf course managed by The Trump Organization, and luxury homes in association with Versace, Cavalli, Just Cavalli, de Grisogono, Paramount Hotels & Resorts, Rotana and the Radisson Hotel Group. With a consistent vision, and strong momentum, DAMAC Properties is building the next generation of Middle Eastern luxury living.

DAMAC places a great emphasis on philanthropy and corporate social responsibility. The Hussain Sajwani – DAMAC Foundation, a joint initiative between DAMAC Group and Hussain Sajwani, recently announced the launch of the 'Fresh Slate' in collaboration with the Dubai Police General Headquarters, aimed at aiding detainees in Dubai's Punitive and Correctional Institutions who have been charged with petty offences.

The HSDF has also pledged AED 5 million for the 1 Billion Meals initiative launched by Vice President and Prime Minister of the UAE, and Ruler of Dubai, His Highness Sheikh Mohammed bin Rashid Al Maktoum, at the start of Ramadan 2022, aimed at providing meals to underprivileged communities in 50 countries across the world.

DAMAC has also supported the vision of Sheikh Mohammed to train one million Arab coders in creating an empowered society through learning and skills development, an initiative that successfully wrapped up in May 2022.

LUXURY BY APPOINTMENT

CONTACT US AT ANY OF OUR OFFICES OR VISIT [DAMACPROPERTIES.COM](https://damacproperties.com)

UNITED ARAB EMIRATES

Dubai
Tel: 800-DAMAC (800-32622)
E-mail: dubai@damacgroup.com

Park Towers – Sales Centre
Dubai International Financial Centre

AYKON City – Sales Centre
Floor 63, Sheikh Zayed Road

DAMAC Hills – Sales Centre
Sheikh Zayed bin Hamdan Al Nahyan
Street

DAMAC Hills – Sales Centre
Golf Veduta, Townhouse TH2

DAMAC Hills – Sales Centre
Bellavista (Carson Building)

DAMAC Hills 2 – Sales Centre
Amazonia Cluster, Villa 333

DAMAC Hills 2 – Sales Centre
Water Town

QATAR

Building 90, New Solta Area
All bin Abi Tailb Street
Next to Omar bin Al Khattab
Health Centre
Tel: +974 44 666 986
Fax: +974 44 554 576
E-mail: doha@damacgroup.com

KINGDOM OF SAUDI ARABIA

DAMAC Towers Riyadh
South Tower
Olaya District
King Fahd Road
PO Box 102460
Tel: +966 11 835 0300
E-mail: ksa@damacgroup.com

TURKEY

Levazim, Mah. Koru Sk.
Zorlu Centre No. 2
IC Kapi No. 347, Beşiktaş/Istanbul
Turkey
Tel: +90 212 892 0327
Fax: +90 212 890 7184
E-mail: turkey.office@damacgroup.com

LEBANON

Unit 1801, 18th Floor
DAMAC Tower
Omar Daouk Street
Mina El Hosn, Beirut Central District
Tel: +961 81 647 200
E-mail: beirut@damacgroup.com

JORDAN

Opposite Abdali Mall Gate #1
Al Istithmar Street
Abdali Project, Amman
Tel: +962 6 510 7000
Fax: +962 6 565 7896
E-mail: amman@damacgroup.com

UNITED KINGDOM

4th Floor, 100 Brompton Road
Opposite Harrods
Knightsbridge, London
SW3 1ER, United Kingdom
Tel: +44 (0) 207 590 8050
E-mail: sales@damactower.co.uk

DAMAC