



L U X U R Y

U N I T P L A N S





LEVEL: 2



LEVEL: 3



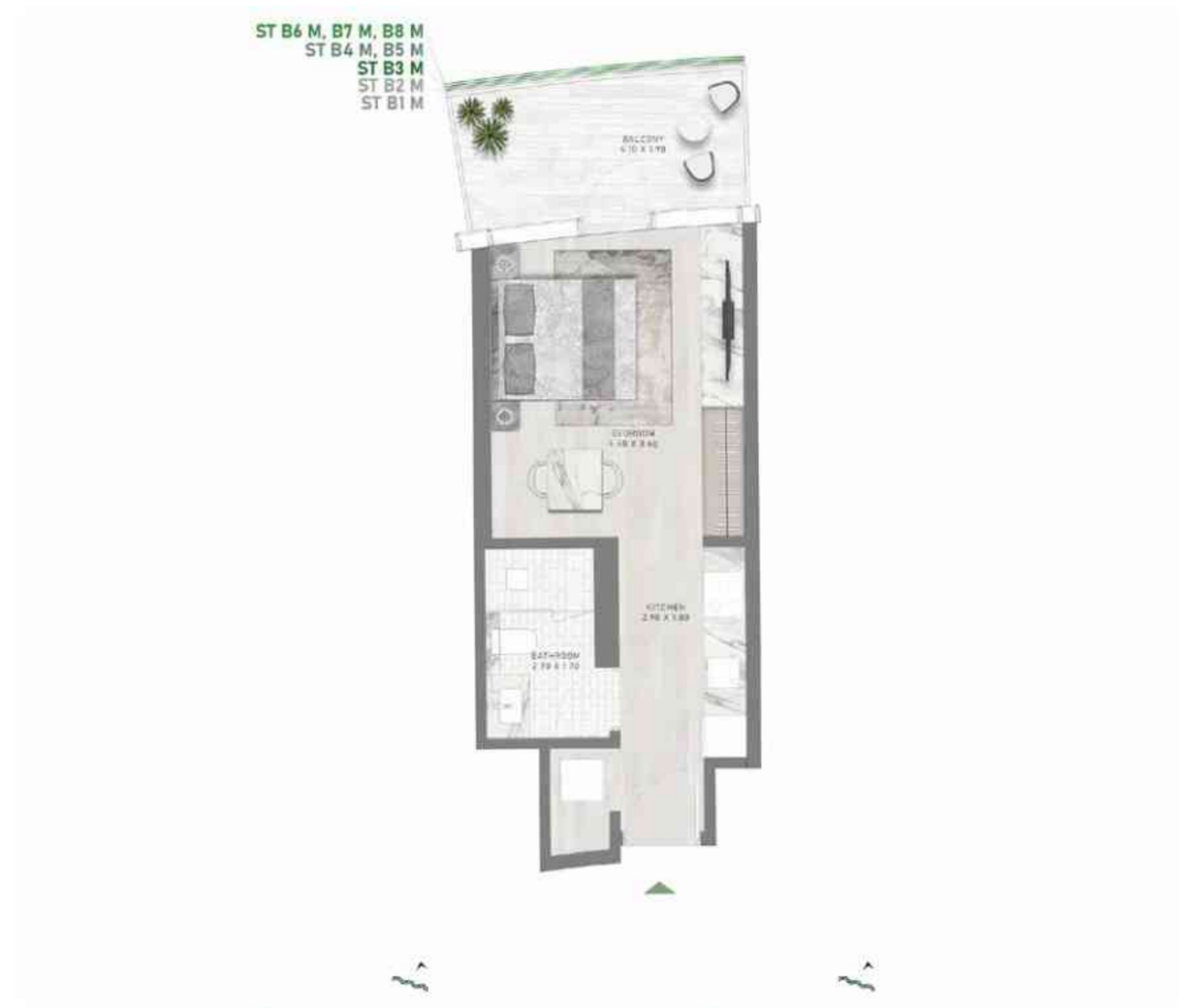
LEVEL: 4



LEVEL: 5



LEVEL: 6-9



LEVEL: 2



LEVEL: 3



LEVEL: 4



LEVEL: 5



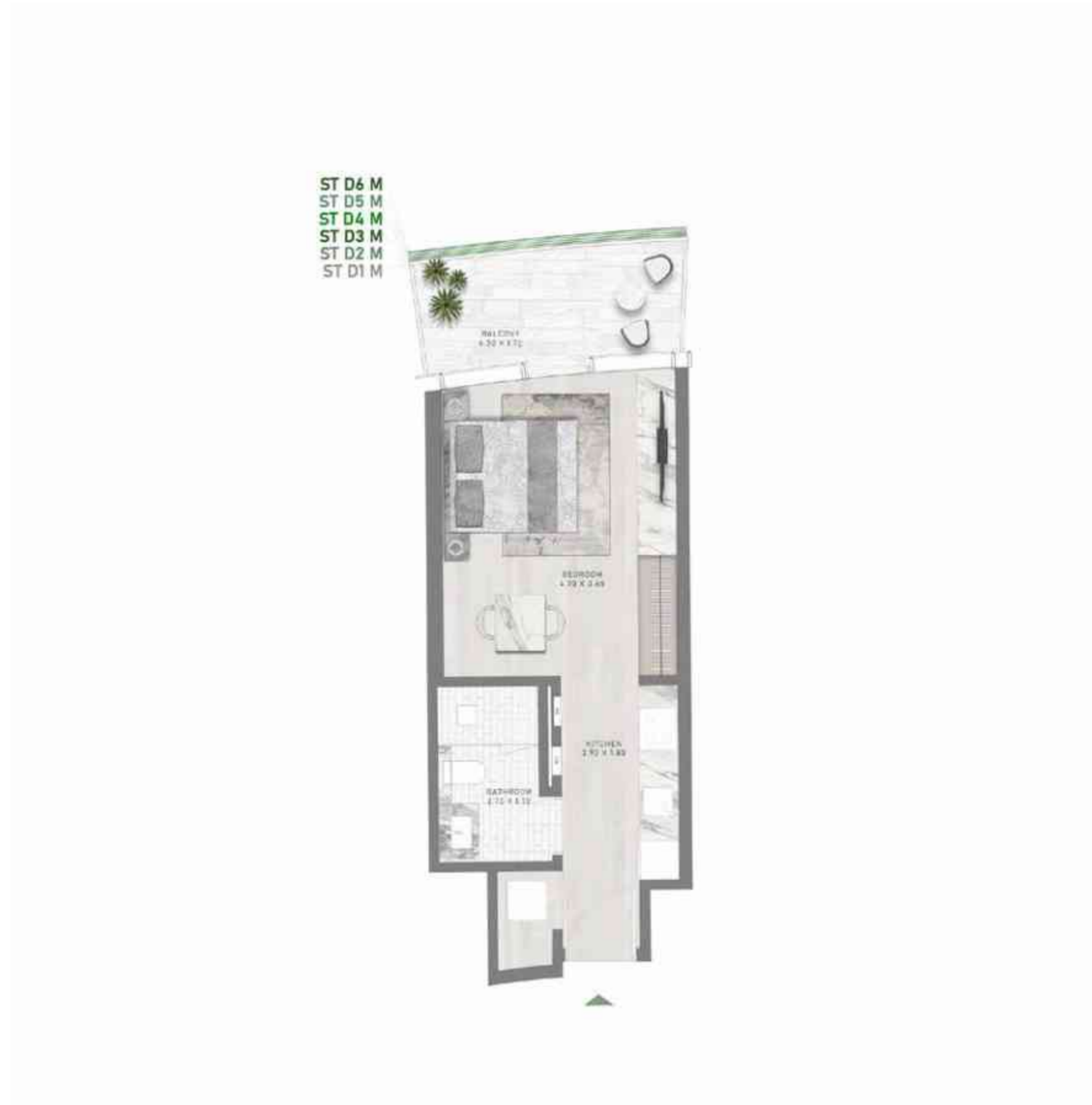
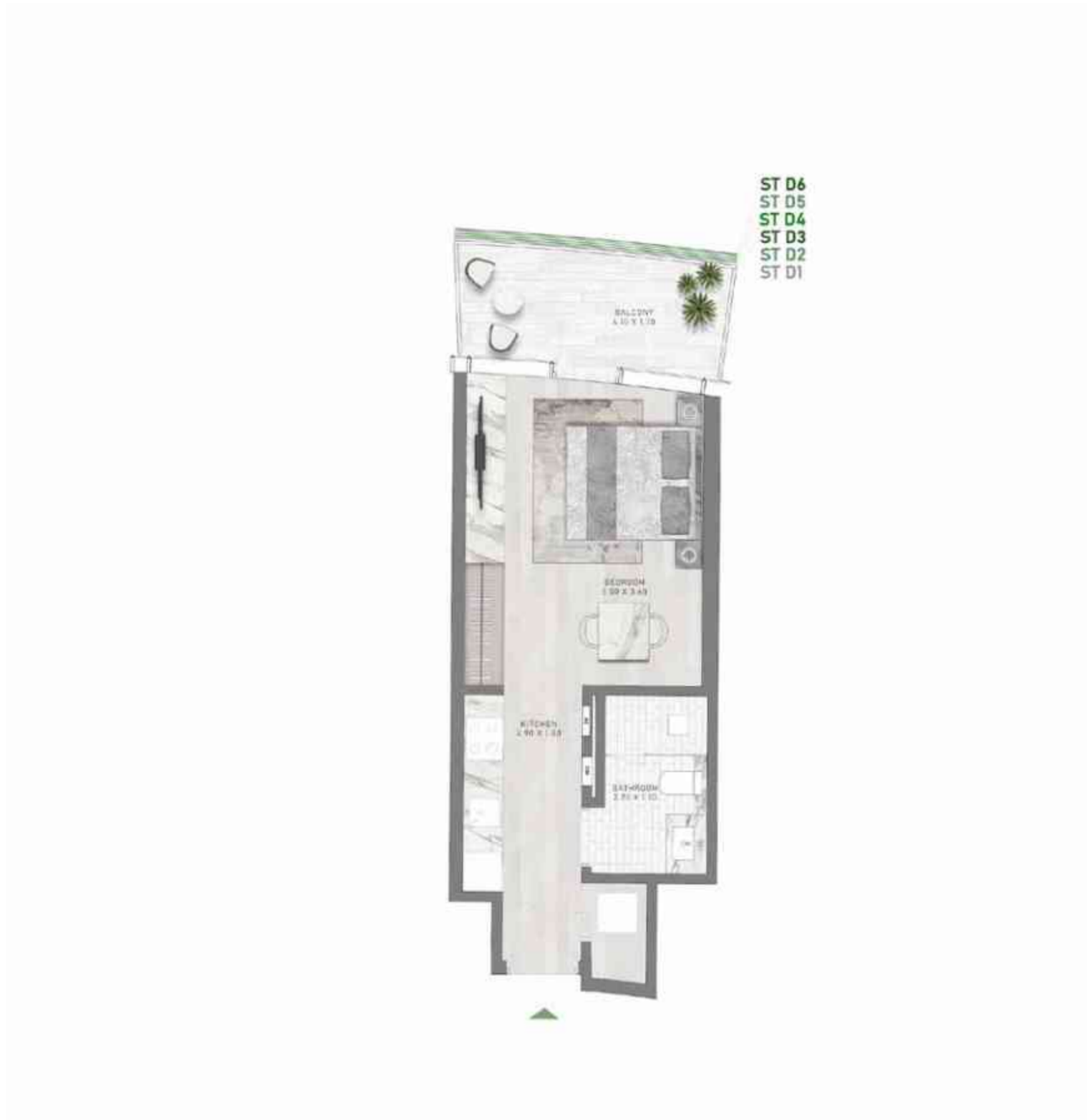
LEVEL: 6-9



LEVEL: 10-15

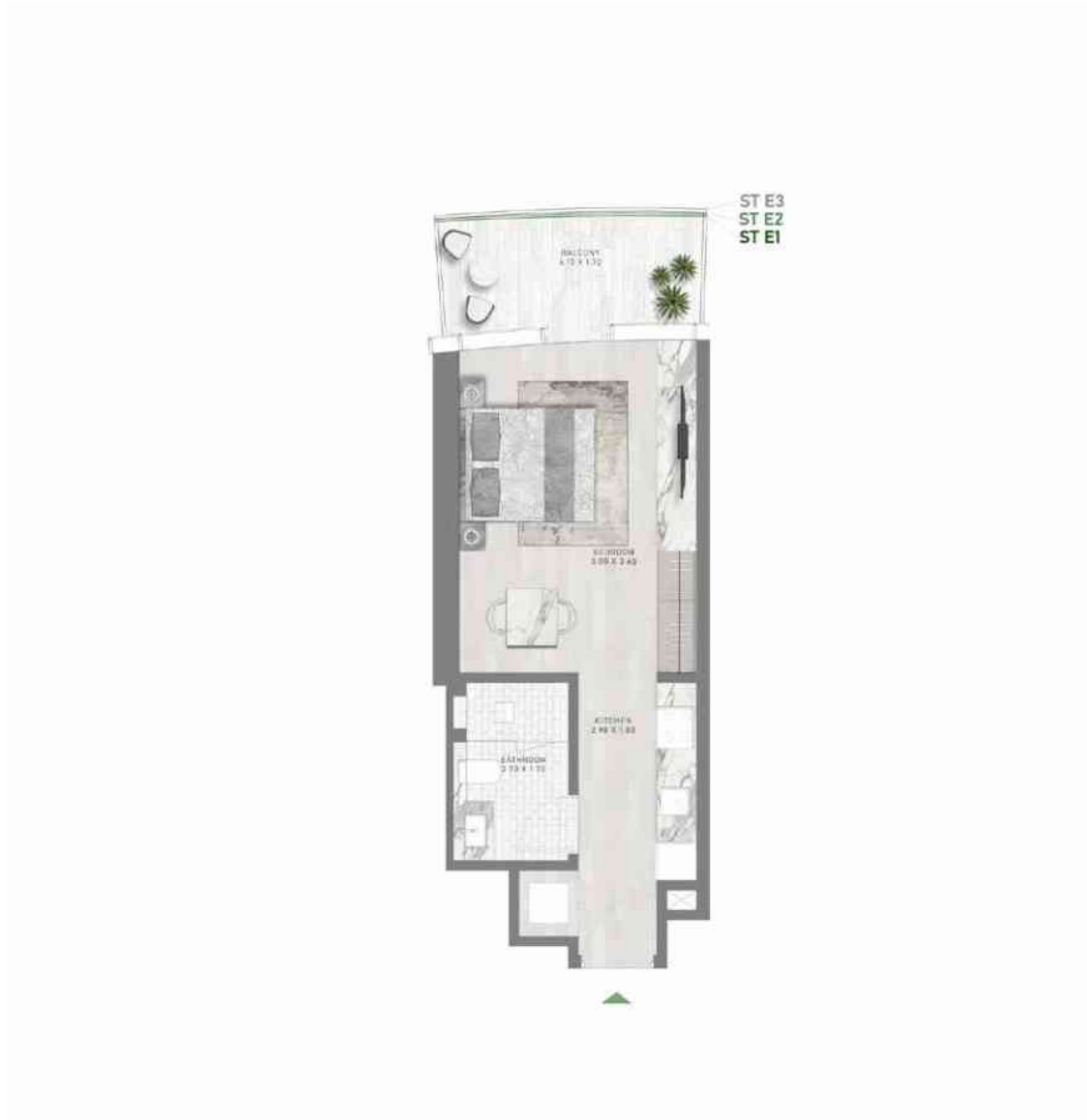


LEVEL: 10-15



# STUDIO

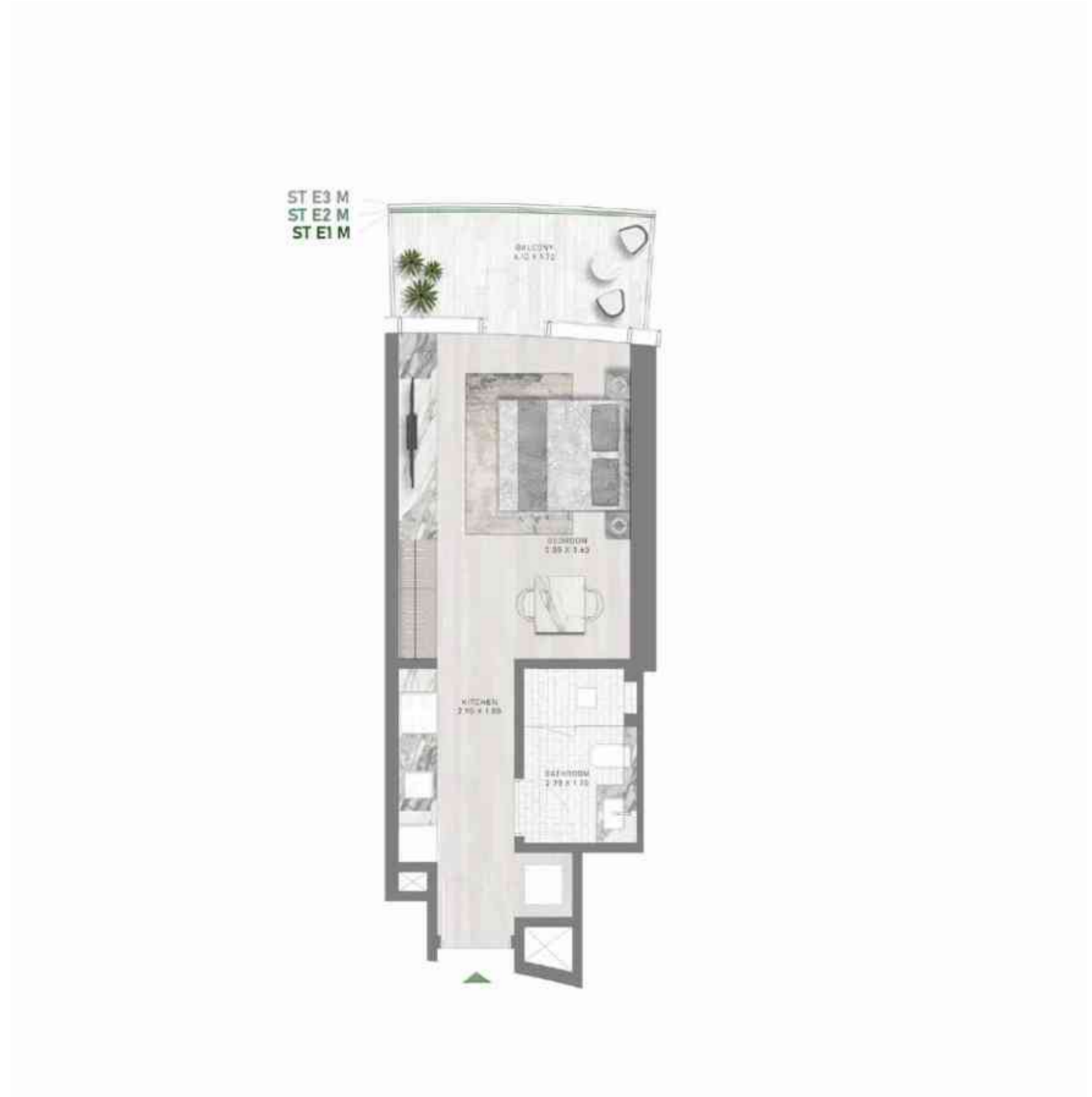
TYPE E1-E3



LEVEL: 16-18

# STUDIO

TYPE E1-E3-M



LEVEL: 16-18

# STUDIO

TYPE F1-F3



ST F3  
ST F2  
ST F1



LEVEL: 16-18

# STUDIO

TYPE F1-F3-M



ST F3 M  
ST F2 M  
ST F1 M



LEVEL: 16-18





LEVEL: 2



LEVEL: 3



LEVEL: 4



LEVEL: 2



LEVEL: 3



LEVEL: 4



LEVEL: 2



LEVEL: 3



LEVEL: 4



LEVEL: 2



LEVEL: 3



LEVEL: 4

# 1-BEDROOM

TYPE A1



LEVEL: 5

# 1-BEDROOM

TYPE A1-M



LEVEL: 5

# 1-BEDROOM

TYPE A2-A5



LEVEL:6-9

# 1-BEDROOM

TYPE A2-A5-M



LEVEL:6-9

# 1-BEDROOM

TYPE B1-B5



LEVEL: 5



LEVEL: 6-9

# 1-BEDROOM

TYPE B1-B5-M



LEVEL: 5



LEVEL: 6-9

# 1-BEDROOM

TYPE C1-C6



LEVEL:10-15

# 1-BEDROOM

TYPE C1-C6-M



LEVEL:10-15

# 1-BEDROOM

TYPE D1-D6



LEVEL:10-15

# 1-BEDROOM

TYPE D1-D6-M



LEVEL:10-15

# 1-BEDROOM

TYPE E1-E3



LEVEL:16-18

# 1-BEDROOM

TYPE E1-E3-M



LEVEL:16-18



# 1-BEDROOM

TYPE F1-F3



LEVEL:16-18

# 1-BEDROOM

TYPE F1-F3-M



LEVEL:16-18

# 1-BEDROOM

TYPE G1-G3



LEVEL 20-22

# 1-BEDROOM

TYPE G1-G3-M



LEVEL 20-22

# 1-BEDROOM

TYPE H1-H3



LEVEL 20-22

# 1-BEDROOM

TYPE H1-H3-M



LEVEL 20-22

# 1-BEDROOM

TYPE 11-13



LEVEL 20-22

# 1-BEDROOM

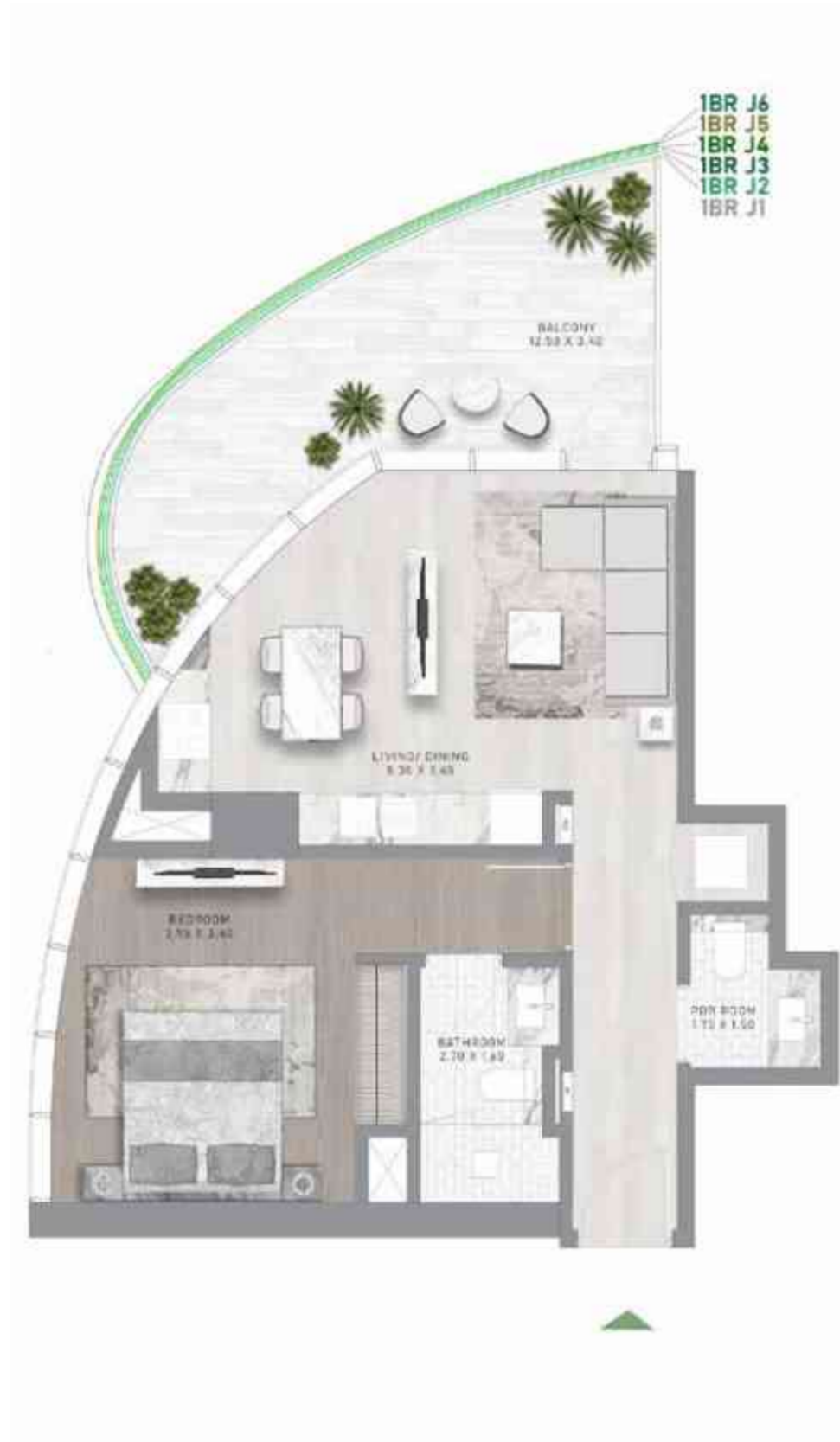
TYPE 11-13-M



LEVEL 20-22

# 1-BEDROOM

TYPE J1-J6



LEVEL: 23-28

# 1-BEDROOM

TYPE J1-J6-M



LEVEL: 23-28

# 1-BEDROOM

TYPE J7-J13



LEVEL 29-35

# 1-BEDROOM

TYPE J7-J13-M



LEVEL 29-35

# 1-BEDROOM

TYPE K1-K6



LEVEL: 23-28

# 1-BEDROOM

TYPE K1-K6-M



LEVEL: 23-28

# 1-BEDROOM

TYPE K7-K13



LEVEL 29-35

# 1-BEDROOM

TYPE K7-K13-M



LEVEL 29-35



# 1-BEDROOM

TYPE L1-L6



LEVEL: 23-28

# 1-BEDROOM

TYPE L1-L6-M



LEVEL: 23-28

# 1-BEDROOM

TYPE L7-L13



LEVEL 29-35

# 1-BEDROOM

TYPE L7-L13-M

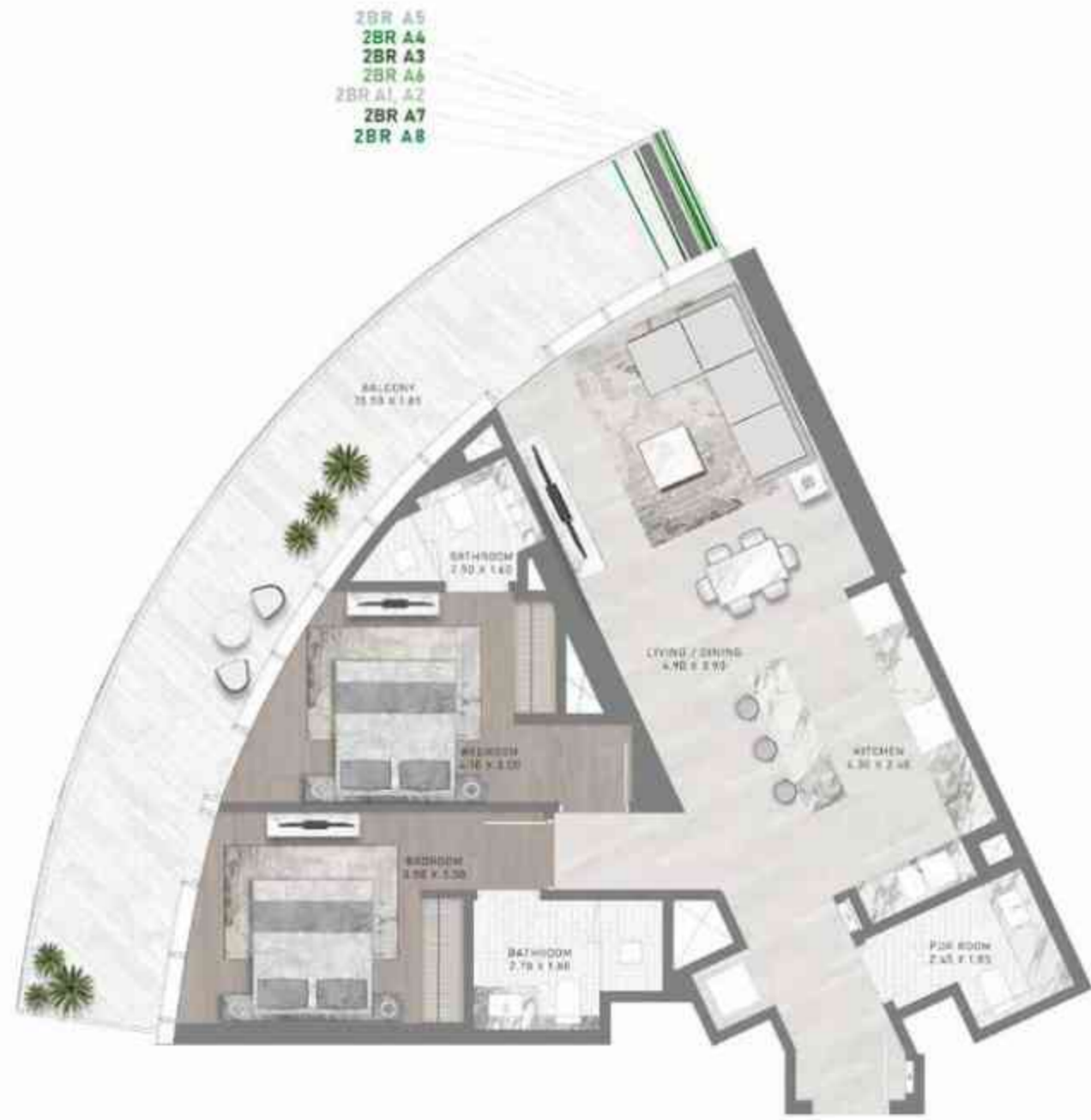


LEVEL 29-35



# 2-BEDROOM

TYPE A1-A8



2BR A5  
 2BR A4  
 2BR A3  
 2BR A6  
 2BR A1, A2  
 2BR A7  
 2BR A8



LEVEL: 2



LEVEL: 3



LEVEL: 4



LEVEL: 5



LEVEL: 6-9

# 2-BEDROOM

TYPE A1-A8-M



2BR A1 M, A2 M, A3 M, A8 M  
 2BR A4 M  
 2BR A5 M, A6 M, A7 M



LEVEL: 2



LEVEL: 3



LEVEL: 4



LEVEL: 5



LEVEL: 6-9

D A M A C C A N A L C R O W N B Y D E G R I S O O N O

D A M A C C A N A L C R O W N B Y D E G R I S O O N O

# 2-BEDROOM

TYPE B1-B6



LEVEL:10-15

# 2-BEDROOM

TYPE B1-B6-M



LEVEL:10-15

D A M A C C A N A L C R O W N B Y D E G R I S O O N O

O N O O S I S R I S O O N O

# 2-BEDROOM

TYPE C1-C3



LEVEL:16-18

# 2-BEDROOM

TYPE C1-C3-M



LEVEL:16-18

D A M A C C A N A L C R O W N B Y D E G R I S O O N O

O Z O O S I S R I S O O N B Y D E G R I S O O N O

# 2-BEDROOM

TYPE D1-D3



LEVEL 20-22

# 2-BEDROOM

TYPE D1-D3-M



LEVEL 20-22

D A M A C C A N A L C R O W N B Y D E G R I S O O N O

D A M A C C A N A L C R O W N B Y D E G R I S O O N O





## 2-BEDROOM

TYPE E7-E13



2BR E12, E13  
2BR E7, E8  
2BR E9, E10, E11



LEVEL 29-35

## 2-BEDROOM

TYPE E7-E13-M



2BR E8M, E9M, E10M  
2BR E7M  
2BR E11M, E12M  
2BR E13M



LEVEL 29-35

# 2-BEDROOM

TYPE F1



LEVEL: 2

# 2-BEDROOM

TYPE F1-M



LEVEL: 2

2-BEDROOM

TYPE G1



LOWER



LEVEL: 3

2-BEDROOM

TYPE G1



UPPER



LEVEL: 4

D A M A C C A N A L C R O W N B Y D E G R I S O O N O

O N O O S I S R I S O O N O

# 2-BEDROOM

TYPE G1



TERRACE



LEVEL 5





# 2-BEDROOM

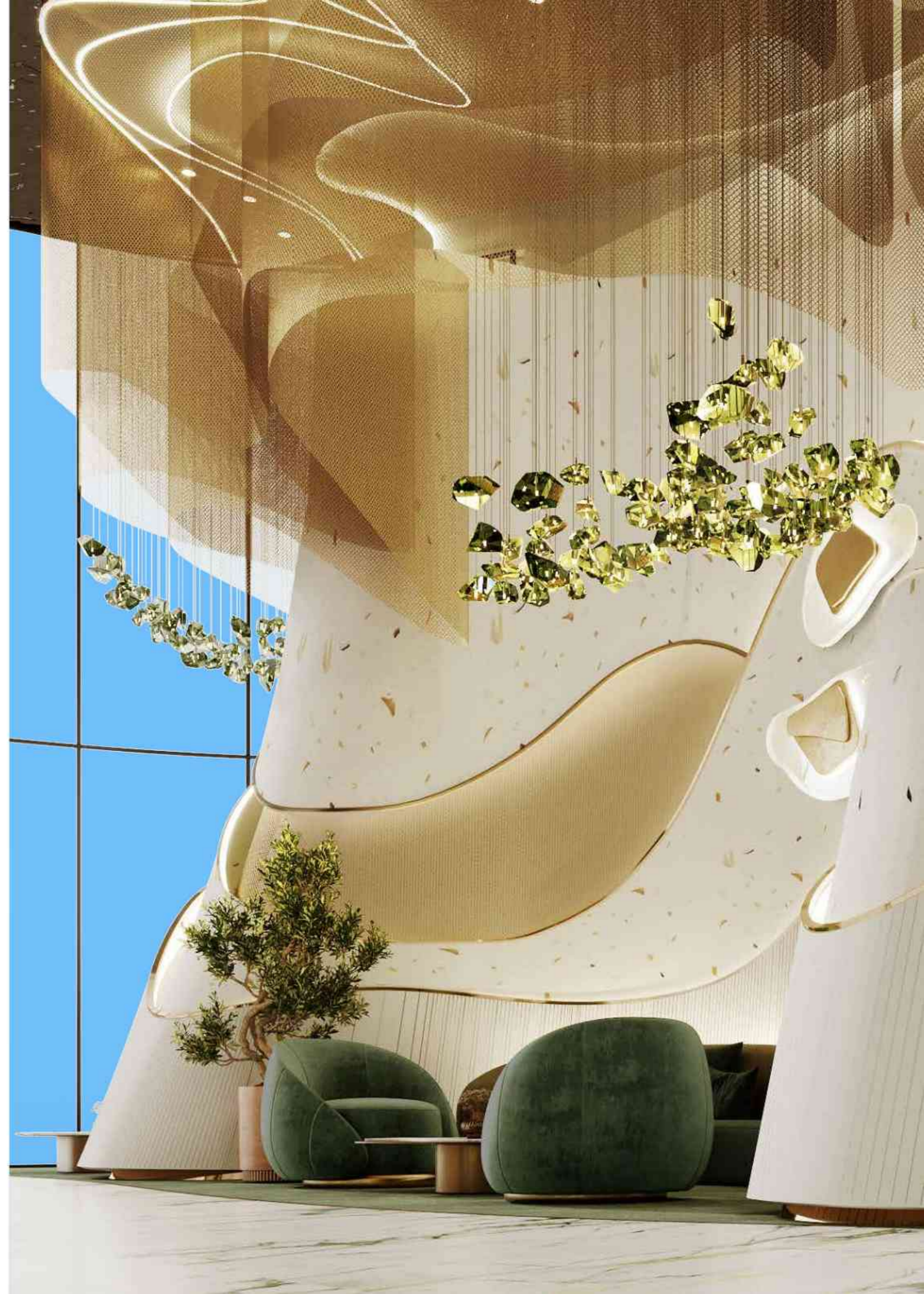
TYPE G1-M




TERRACE



LEVEL 5





S U P E R - L U X U R Y

U N I T P L A N S









# DAMAC PROPERTIES

## LIVE THE LUXURY

DAMAC Properties has been at the forefront of the Middle East's luxury real estate market since 2002, delivering award-winning residential, commercial and leisure properties across the region, including the UAE, Saudi Arabia, Qatar, Jordan, Lebanon, Iraq, Maldives, Canada, the United States, as well as the United Kingdom. Since then, the company has delivered approximately 43,700 homes, with a development portfolio of more than 30,000 at various stages of planning and progress.\*

Joining forces with some of the world's most eminent fashion and lifestyle brands, DAMAC has brought new and exciting living concepts to the market in collaborations that include a golf course managed by The Trump Organization, and luxury homes in association with Versace, Cavalli, Just Cavalli, de Grisogono, Paramount Hotels & Resorts, Rotana and the Radisson Hotel Group. With a consistent vision, and strong momentum, DAMAC Properties is building the next generation of Middle Eastern luxury living.

DAMAC places a great emphasis on philanthropy and corporate social responsibility. The Hussain Sajwani – DAMAC Foundation, a joint initiative between DAMAC Group and Hussain Sajwani, recently announced the launch of the 'Fresh Slate' in collaboration with the Dubai Police General Headquarters, aimed at aiding detainees in Dubai's Punitive and Correctional Institutions who have been charged with petty offences.

The HSDF has also pledged AED 5 million for the 1 Billion Meals Initiative launched by Vice President and Prime Minister of the UAE, and Ruler of Dubai, His Highness Sheikh Mohammed bin Rashid Al Maktoum, at the start of Ramadan 2022, aimed at providing meals to underprivileged communities in 50 countries across the world.

DAMAC has also supported the vision of Sheikh Mohammed to train one million Arab coders in creating an empowered society through learning and skills development, an initiative that successfully wrapped up in May 2022.

\*As of 31<sup>st</sup> December 2022.

## LUXURY BY APPOINTMENT

CONTACT US AT ANY OF OUR OFFICES OR VISIT [DAMACPROPERTIES.COM](https://damacproperties.com)

### UNITED ARAB EMIRATES

Dubai  
Tel: 800-DAMAC (800-32622)  
E-mail: [dubai@damacgroup.com](mailto:dubai@damacgroup.com)

Park Towers – Sales Centre  
Dubai International Financial Centre

AYKON City – Sales Centre  
Floor 63, Sheikh Zayed Road

DAMAC Hills – Sales Centre  
Golf Veduta, Townhouse TH2

DAMAC Hills – Sales Centre  
Bellavista (Carson Building)

DAMAC Hills 2 – Sales Centre  
Amazonia Cluster, Villa 333

DAMAC Hills 2 – Sales Centre  
Water Town

### QATAR

Building 90, New Solta Area  
Ali bin Abi Talib Street  
Next to Omar bin Al Khattab  
Health Centre  
Tel: +974 44 666 986  
Fax: +974 44 554 576  
E-mail: [doha@damacgroup.com](mailto:doha@damacgroup.com)

### KINGDOM OF SAUDI ARABIA

DAMAC Towers Riyadh  
South Tower  
Olaya District  
King Fahd Road  
PO Box 102460  
Tel: +966 11 835 0300  
E-mail: [ksa@damacgroup.com](mailto:ksa@damacgroup.com)

### TURKEY

Levazim, Mah. Koru Sk.  
Zorlu Centre No. 2  
IC Kapi No. 347, Beşiktaş/Istanbul  
Turkey  
Tel: +90 212 892 0327  
Fax: +90 212 890 7184  
E-mail: [turkey.office@damacgroup.com](mailto:turkey.office@damacgroup.com)

### LEBANON

Unit 1801, 18th Floor  
DAMAC Tower  
Omar Daouk Street  
Mina El Hosn, Beirut Central District  
Tel: +961 81 647 200  
E-mail: [beirut@damacgroup.com](mailto:beirut@damacgroup.com)

### JORDAN

Opposite Abdali Mall Gate #1  
Al Istithmar Street  
Abdali Project, Amman  
Tel: +962 6 510 7000  
Fax: +962 6 565 7896  
E-mail: [amman@damacgroup.com](mailto:amman@damacgroup.com)

### UNITED KINGDOM

DAMAC Tower  
63-71 Bondway London SW8 1SQ  
Tel: +44 (0) 207 590 8050  
[damactower.co.uk](mailto:damactower.co.uk)

***DAMAC***