

# SAVANNA

CREEK BEACH

EMAAR

DUBAI CREEK HARBOUR

# THE WORLD OF TOMORROW





## DUBAI CREEK HARBOUR

The heart of our bold new vision for Dubai. The eight square kilometre waterfront destination is bound to push the frontiers of architecture, design and the quality of life. Residents of Dubai Creek Harbour enjoy proximity to:



10 Mins from  
Burj Khalifa



15 Mins from  
Dubai Int'l Airport



Wildlife  
Sanctuary



Home of Pink  
Flamingos





## CREEK BEACH

Creek Beach is Dubai's first-of-its-kind urban beach in the heart of Dubai Creek Harbour. Located along the historic Dubai Creek, Creek Beach is conceived to offer you the ultimate family-friendly retreat. From 700 metres of pristine white sands to the infinity pool and spectacular sunset views, this is paradise reborn.





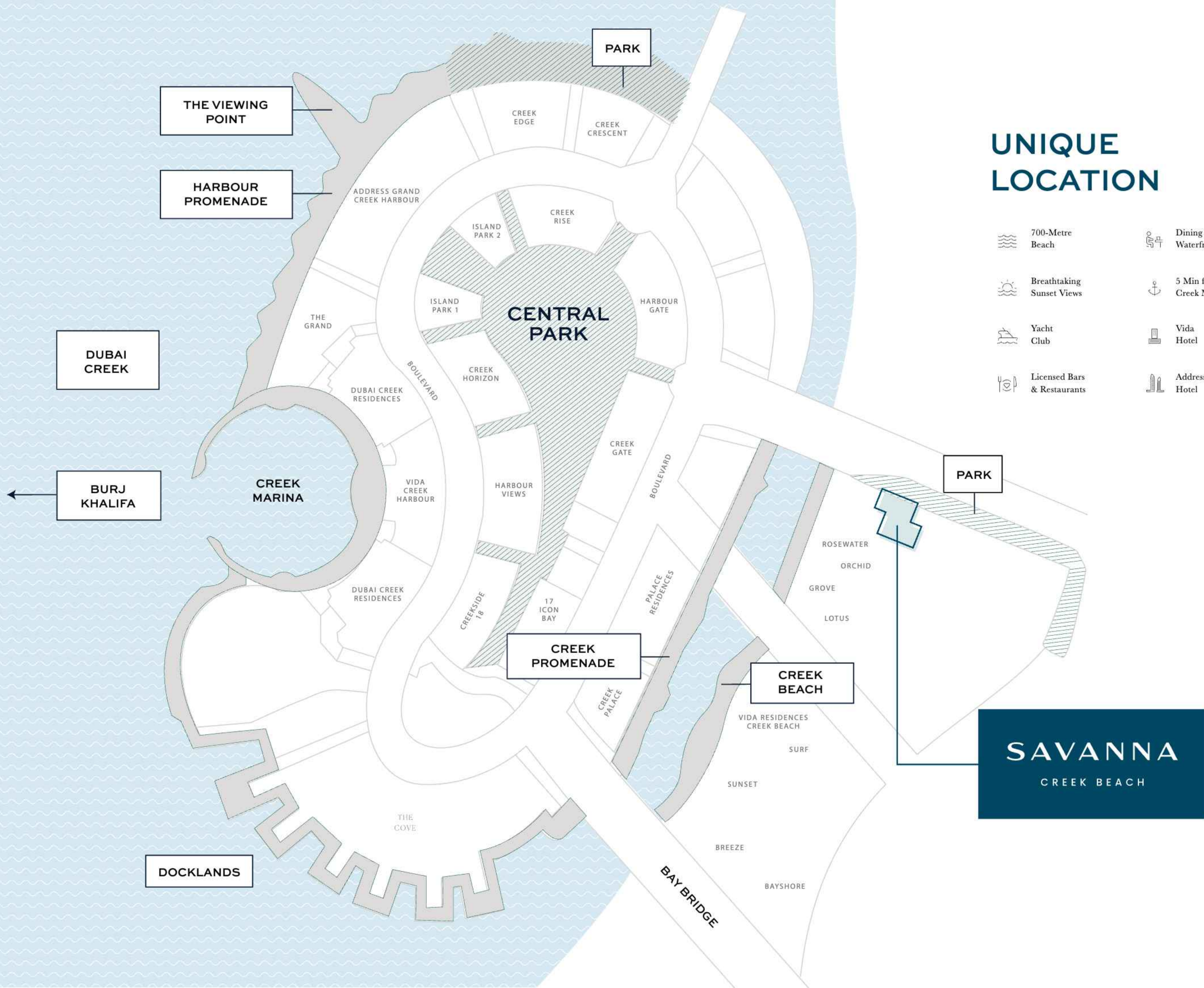
## WELCOME TO SAVANNA

Savanna is a collection of 1, 2 and 3-bedroom apartments adjacent to a lush park. The elegantly designed buildings occupy an enviable location amidst world-class amenities, with a comprehensive network of roads providing convenient links to enjoy the very best of Dubai and beyond.



# UNIQUE LOCATION

-  700-Metre Beach
-  Breathtaking Sunset Views
-  Yacht Club
-  Licensed Bars & Restaurants
-  Dining at The Waterfront
-  5 Min from Creek Marina
-  Vida Hotel
-  Address Hotel



**SAVANNA**  
CREEK BEACH

UNWIND IN A  
BEAUTIFULLY PLANNED  
LIVING ENVIRONMENT







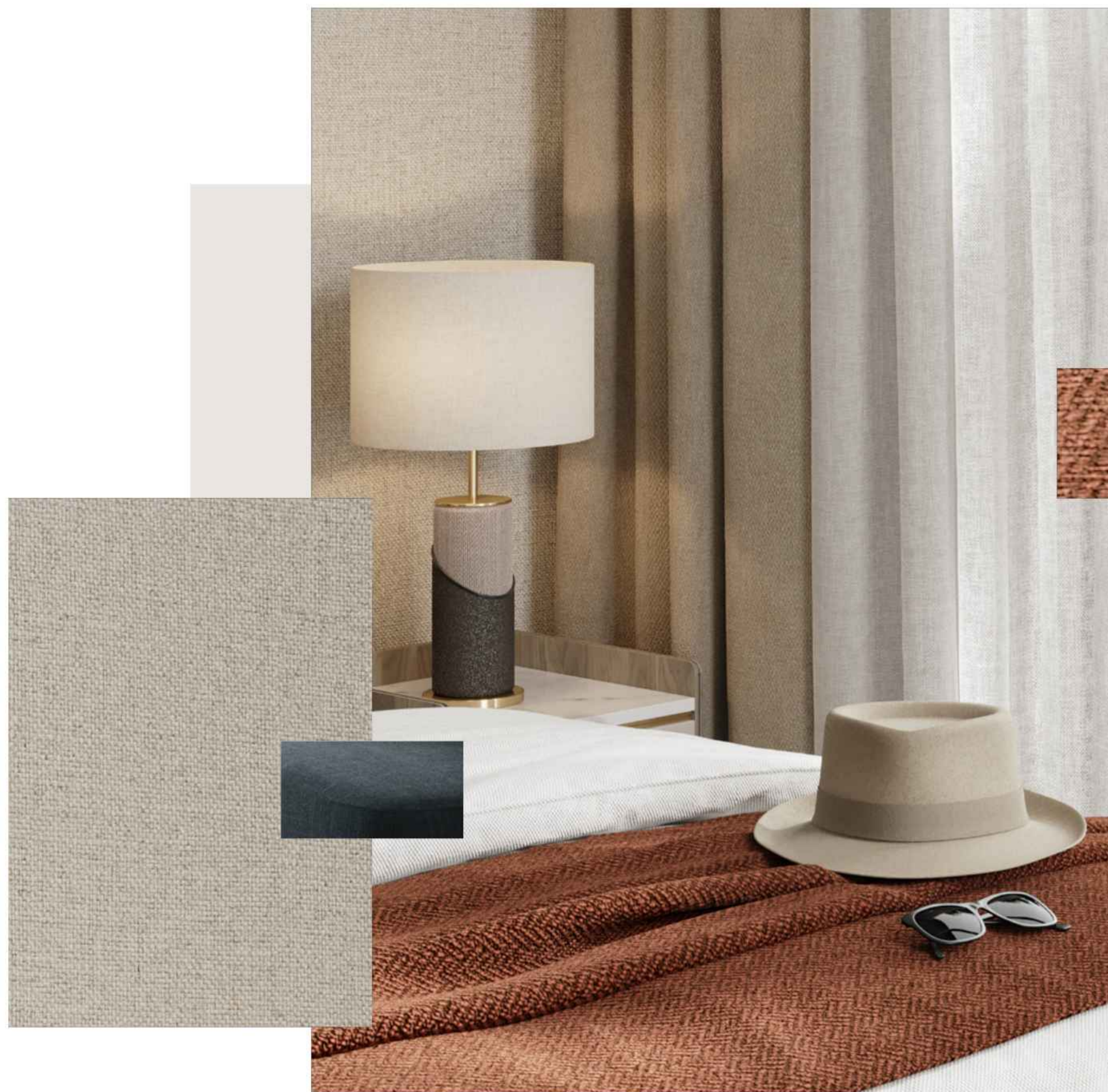
## SERENE URBAN RELAXATION

Savanna is a chic residential community consisting of three buildings rising around a lively central plaza, and its apartments range in size from one to three bedrooms. Each apartment is flooded with natural light and has its own private balcony or terrace, adding to the resort atmosphere with enchanting views of the nearby park.



## TAILORED TO YOUR LIFESTYLE

Savanna's buildings, each with a unique exterior, feature high-quality construction, cutting-edge architecture, and elegant, spacious interiors with superb finishes that appeal to those who value a cosmopolitan lifestyle. Light-filled living rooms, bedrooms, and balconies are complemented by an elegant communal inner plaza and views of the lush greenery of the park that is only a short stroll away.



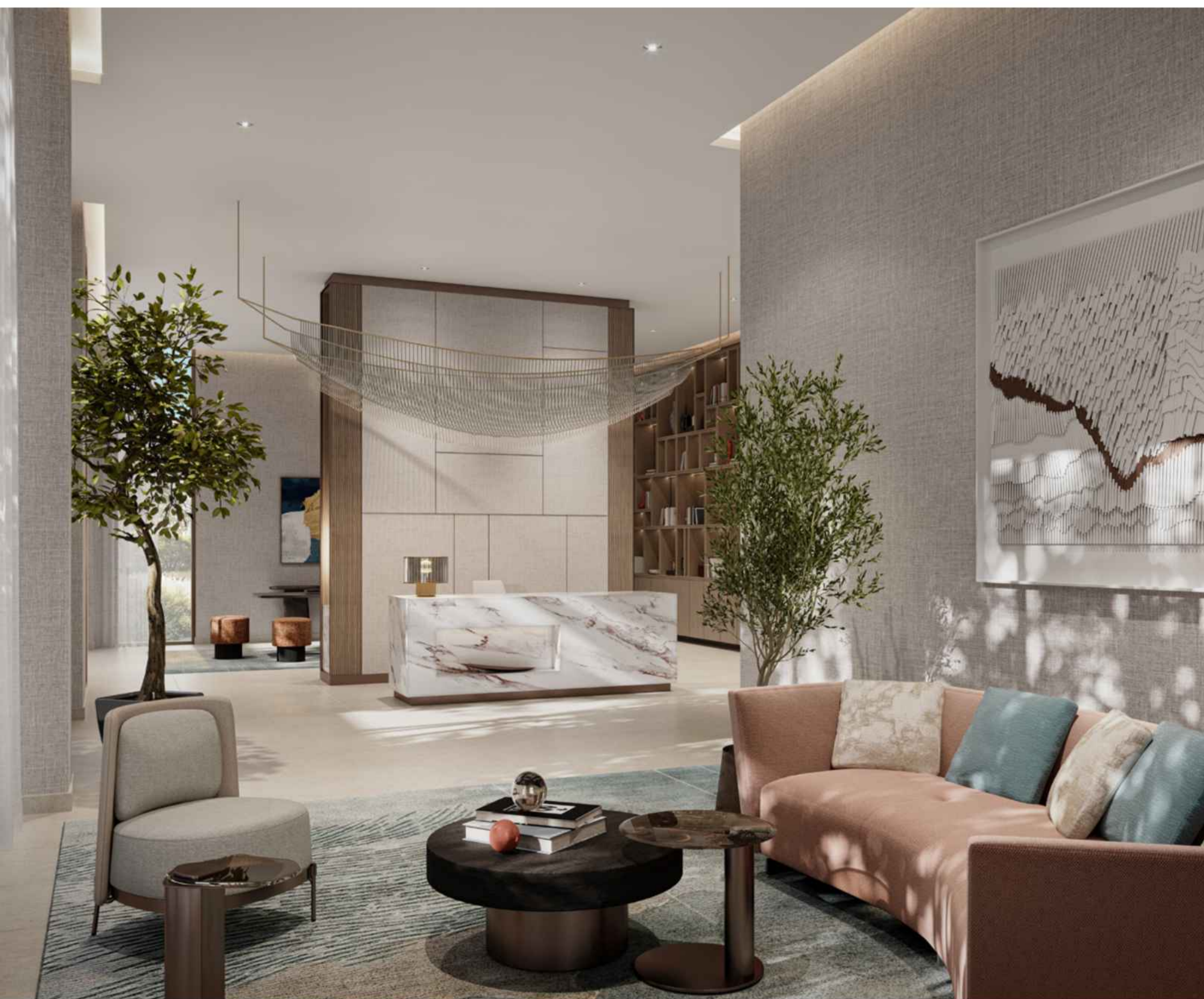
**REDEFINING SENSUAL  
LUXURY AND  
BRIGHT OPENNESS**



## CONTEMPORARY VIBES

Each home at Savanna is designed with the utmost attention to detail, maximising the available space and natural light to create an atmosphere of contemporary, understated luxury.





## UNDERSTATED LUXURY

Savanna's unique personality is largely driven by a minimalist aesthetic that reflects the contemporary home's air of refined sophistication. Choose your future home in one, two, or three-bedroom apartments that look out onto stylish courtyards and elegant landscaping.



**MODERN CITY LIVING WITH  
STYLISH DESIGN THROUGHOUT**









## LEISURE, FUN & RELAXATION

Savanna offers a lifestyle unlike any other, complete with a variety of places to recharge, escape, relax, and socialise. The community features two town squares, a private pool, a town centre with shops and restaurants, a fitness centre on a private patio, an outdoor play area, a communal room, a barbecue area, and a lush lawn for residents to enjoy an active lifestyle.

- |  |   |
|--|---|
|  Community Pool & Kids Pool |  Barbecue Facilities |
|  Fully Equipped Gym         |  Outdoor Play Area   |
|  Retail at Nearby           |  Town Centre         |





## CO-WORKING TOGETHERNESS

Enhancing the sense of belonging and communal togetherness, Savanna offers a shared working space for residents where they can work, meet and interact. This cutting-edge centre provides the ideal environment for executives, freelancers, entrepreneurs to work from home, with a unique twist!

TODDLERS ONLY PLAY AREA  
FOR THE LITTLE ONES



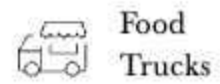
SHARING A MOVIE IN THE  
OUTDOOR CINEMA SPACE





## CREEK MARINA

With a wide variety of retail, dining, and recreational options, Creek Marina never slows down. Landscaped pedestrian walkways offer stunning views of Downtown Dubai at dusk, while world-class art pieces add another layer to the trendsetting lifestyle.



Food Trucks



Art Installations



Yacht Club Marina with 81 Berths



Sculptural Viewing Deck

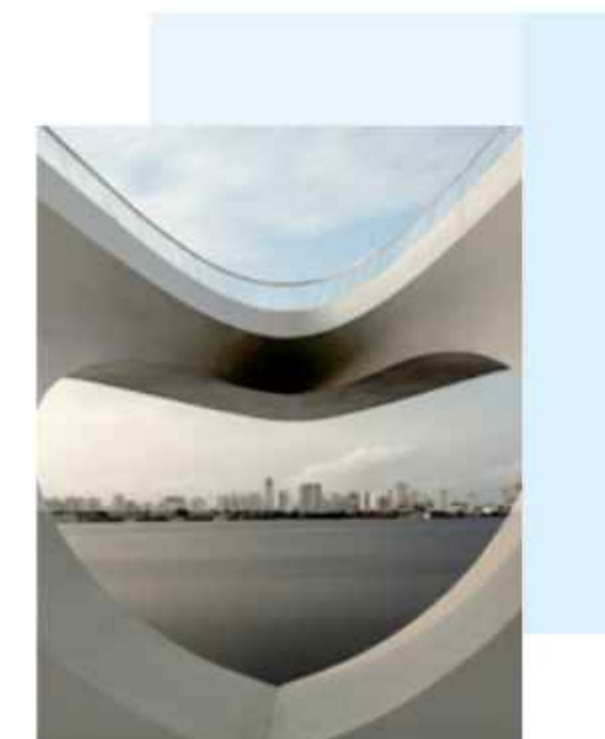


Vida Creek Harbour



Address Hotel





## THE VIEWING POINT

Take in some of the city's most spectacular sights at The Viewing Point at Dubai Creek Harbour. The 11.65m tall and 70-metre long structure spans out over Dubai Creek, with a 26m cantilever projecting out over the water. The walkway offers unobstructed views of the Dubai Creek and surrounding areas, and unique vistas of Downtown Dubai's incredible skyline and back inland towards the stylish Address Grand twin towers.



## CENTRAL PARK

The heart of island living, Dubai Creek Harbour Central Park offers residents a tranquil refuge to unwind, first-class amenities to enjoy, and wide-open spaces to discover. With a total area of six football fields, Dubai's Central Park is one of the largest parks in the emirate and offers a variety of activities for the whole family.



Kids' Play Area



Skating Areas



Lawn Amphitheatre



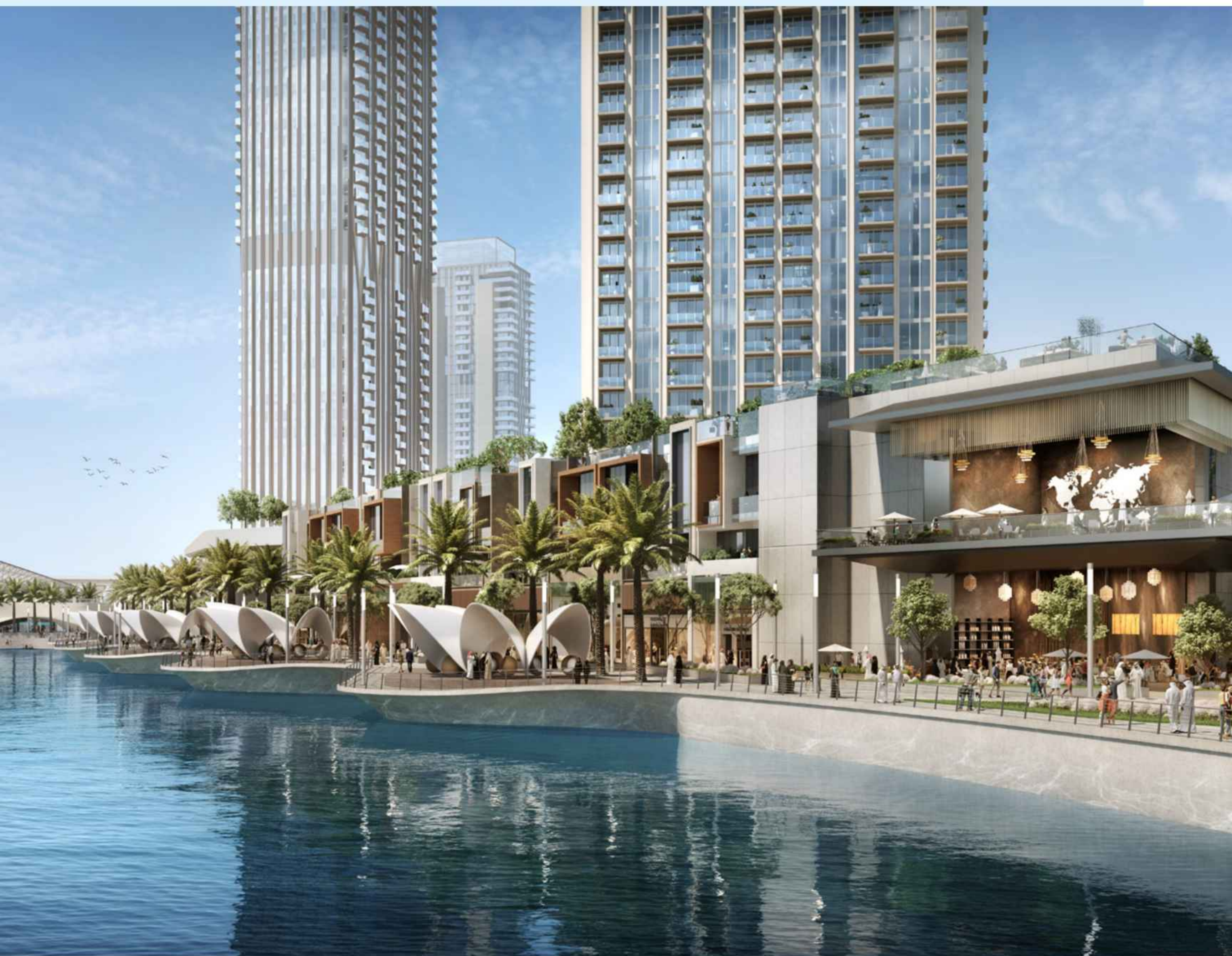
Splash Pad Fitness Plaza



Dog Park







## HARBOUR PROMENADE

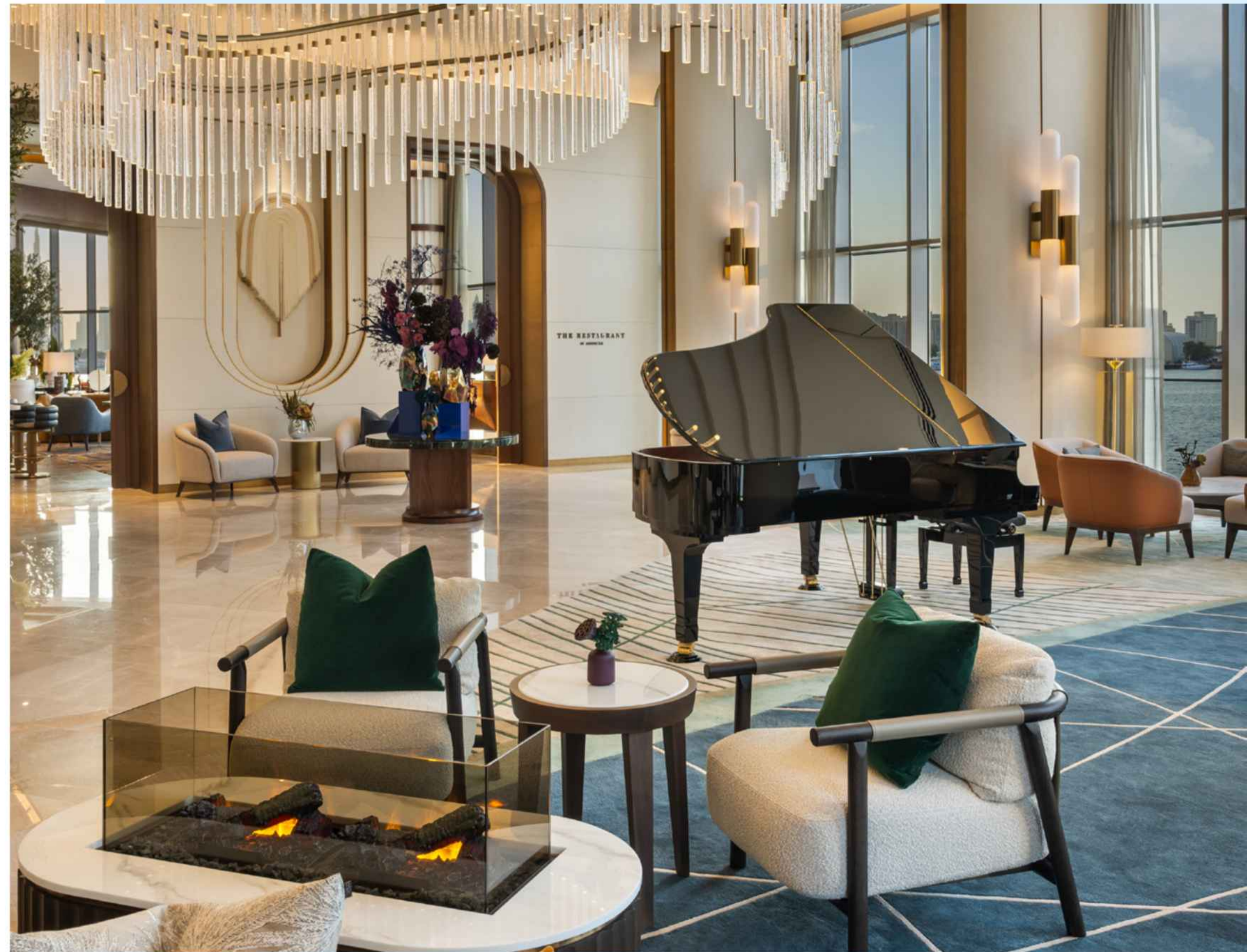
Explore a bustling promenade, an impressive skyline as you sit back and relax on the Harbour Promenade. Set sail across Dubai Creek's glistening waters and take in the city's cityscape from a unique vantage point. Enjoy a wonderful meal while taking in the breathtaking views between shopping and boating.



## WORLD-CLASS HOSPITALITY AT YOUR FINGERTIPS

With Address Grand Creek Harbour and Vida Creek Harbour nearby, you can unwind in the comfort of fine dining and private wellness facilities located mere minutes from your residence.

-  Wellness
-  Events
-  Infinity Pool
-  Fine Dining
-  Viewing Deck
-  Fully Equipped Gym





# EMAAR

## GLOBAL LIFESTYLE DEVELOPER

As one of the most valuable and reputable real estate developers in the world, Emaar aims to provide world-class design and unrivalled products in the most desirable locations. The Group's portfolio consists of large-scale integrated residential developments, shopping malls, hotels, entertainment, and leisure destinations. Some of Emaar's most iconic landmarks include Burj Khalifa, the world's tallest building.

Market Cap AED

**51.8 Bn**

FY 2022

Net Profit AED

**6.8 Bn**

FY 2022

Revenue AED

**24.9 Bn**

As of Dec. 2022

Under Development

**27,000+**

Residential Units

Presence in

**12+**

Global Markets

Delivered

**85,000+**

Residential Units

\*As in 31 December 2022

# SAVANNA

## CREEK BEACH

### CONTACT US

For more information please call 800 36227 (UAE) / +971 4 366 1688 (International)  
or talk to our Property Advisor directly at +971 4888 8844 from 9 AM to 7 PM (GST), Monday to Friday.  
Visit our online sales centre at [emaar.com](http://emaar.com) or any of our Sales Centres across the UAE.

### DUBAI

Emaar Sales Centre | Next to Souq Al Bahar, Downtown Dubai  
9:30 AM to 10 PM, Sunday - Friday  
9:30 AM to 7 PM, Saturday

Dubai Hills Estate Sales Pavilion | Umm Suqeim Road  
Dubai Creek Harbour Sales Pavilion | Ras Al Khor  
From 9:30 AM to 7 PM, Sunday - Saturday

### ABU DHABI

Emaar Sales Centre | Al Nahda Tower, Ground Floor, 4th Street, Corniche, Al Muroor Road  
From 9:30 AM to 7 PM, Sunday - Friday

# EMAAR