



CEDAR

CREEK BEACH

EMAAR

# THE WORLD OF TOMORROW





# DUBAI CREEK HARBOUR



Dubai Creek Harbour is at the heart of our bold new vision for Dubai. The eight square kilometre waterfront destination is bound to push the frontiers of architecture, design and the quality of life. Residents of Dubai Creek Harbour enjoy proximity to:



10 Mins from  
Burj Khalifa



15 Mins from  
Dubai Int'l Airport



Home of Pink  
Flamingos

DUBAI CREEK HARBOUR

# CREEK BEACH



Creek Beach is Dubai's first-of-its-kind urban beach in the middle of Dubai Creek Harbour. Located along the historic Dubai Creek, Creek Beach is conceived to offer you the ultimate family-friendly retreat. From 700 metres of pristine white sands to the infinity pool and spectacular sunset views, this is paradise reborn.







# WELCOME TO CEDAR



There is something fascinating about waking up to the sight of the open sky and picturesque scenes. The skyline of a new city emerging from a historic destination. Every view from every corner is nothing short of amazing.

Welcome to Cedar at Creek Beach.









# SERENE SURROUNDINGS



Apartments at Cedar range in size from one to three bedrooms and are located in a stylish residential community comprised of four buildings that rise around a bustling central plaza.

Private balconies and terraces let in plenty of natural light and contributes to the relaxing atmosphere reflected by the views of the lush park outside.



**A BEAUTIFULLY PLANNED  
LIVING ENVIRONMENT**

# PERFECT CITY LIVING



Those who enjoy a cosmopolitan modern lifestyle will appreciate the high-quality construction, cutting-edge architecture, and attractive, spacious interiors with superior finishes of each building at Cedar.

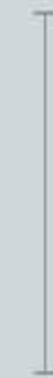
This is the pinnacle of contemporary living in a communal setting with access to the Creek Beach promenade, a lush park, cafés, restaurants, and an excellent childcare facility.







## TAILORED TO YOUR NEEDS



Each Cedar residence is thoughtfully crafted to take full use of its location near the promenade and a brand-new park to the east, while also maximising the use of space and natural light to create an ambiance of modern, understated luxury.

# UNDERSTATED LUXURY



Each of the chic apartments exudes an air of subtle elegance that is consistent with Cedar's own style. One-, two-, and three-bedroom apartments offer views of lush green courtyards.

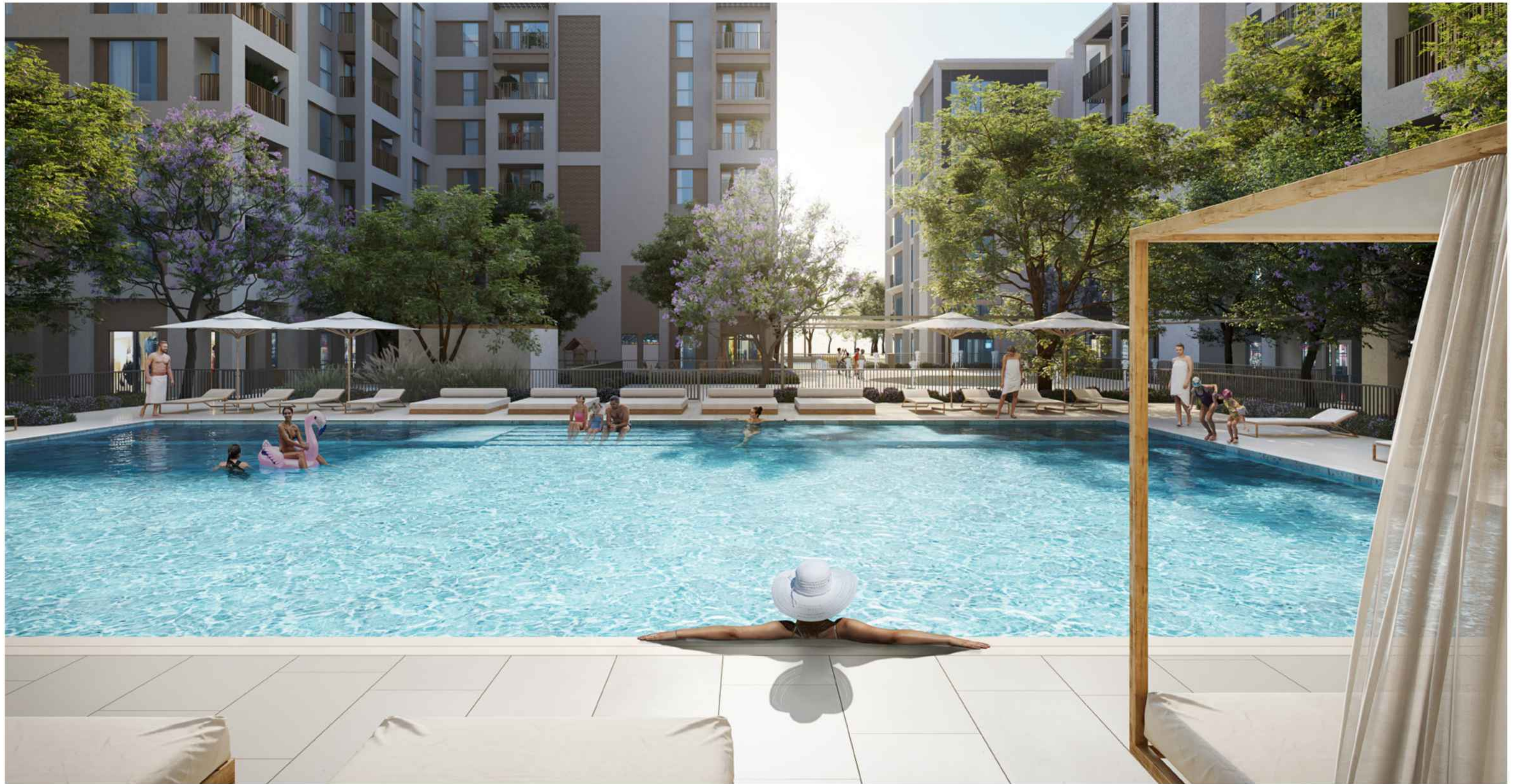




# A UNIQUE LIFESTYLE



There are many places to recharge, escape, relax, and socialise in Cedar, making it possible to live a life that is truly unique. Residents can take advantage of the community's two town squares, private pool, town centre with shops and restaurants, fitness centre on a private patio, outdoor play area, communal room, barbecue area, and lush lawn.









## WORKING REMOTELY, IN STYLE!



Enhancing the sense of belonging and communal togetherness, Cedar offers a shared working space for residents where they can work, meet and interact. This cutting-edge centre provides the ideal environment for executives, freelancers, and entrepreneurs to work from home, with a unique twist!

# THE VIEWING POINT



Take in some of the city's most spectacular sights at The Viewing Point at Dubai Creek Harbour. The 11.65m tall and 70-metre-long structure spans out over Dubai Creek, with a 26m cantilever projecting out over the water. The walkway offers unobstructed views of the Dubai Creek and surrounding areas, and unique vistas of Downtown Dubai's incredible skyline and back inland towards the stylish Address Grand twin towers.





# CREEK MARINA



With a wide variety of retail, dining, and recreational options, Creek Marina never slows down. Landscaped pedestrian walkways offer stunning views of Downtown Dubai at dusk, while world-class art installations add another layer to the trendsetting lifestyle.



Address  
Hotel



Sculptural  
Viewing Deck



Art  
Installations



Food  
Trucks



Yacht Club Marina  
with 81 Berths

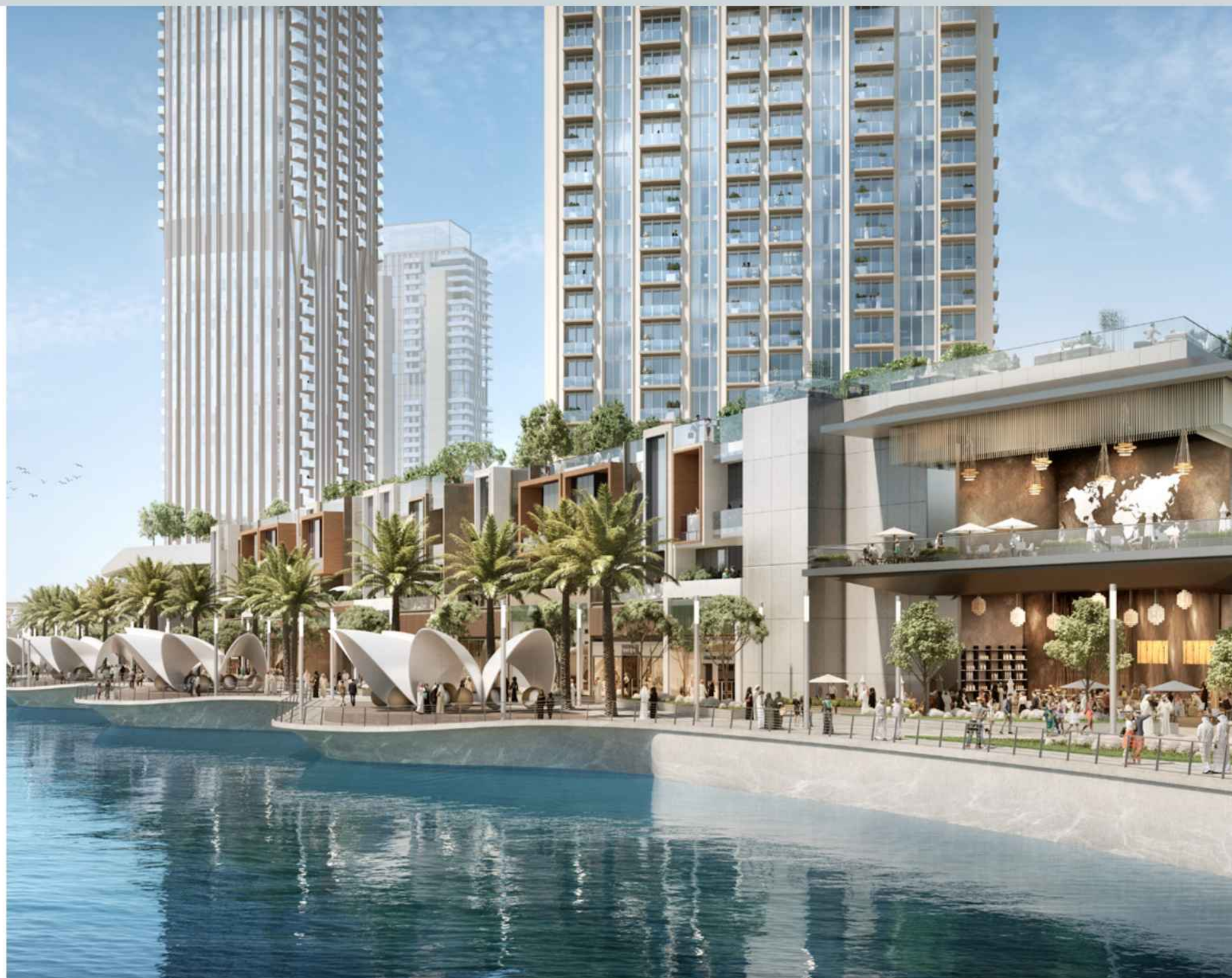


Vida Creek  
Harbour

# HARBOUR PROMENADE



Explore a bustling promenade, an impressive skyline as you sit back and relax on the Harbour Promenade's observation deck. Set sail across Dubai Creek's glistening waters and take in the city's cityscape from a unique vantage point. Enjoy a wonderful meal while taking in the breathtaking views between shopping and boating.





# CENTRAL PARK



The heart of island living, Dubai Creek Harbour Central Park offers residents a tranquil refuge to unwind, first-class amenities to enjoy, and wide-open spaces to discover. With a total area of six football fields, Dubai's Central Park is one of the largest parks in the emirate and offers a variety of activities for the whole family.



Splash Pad  
Fitness Plaza



Kids'  
Play Area



Lawn  
Amphitheatre



Dog  
Park



Skating  
Areas

EMAAR

# GLOBAL LIFESTYLE DEVELOPER



As one of the most valuable and reputable real estate developers in the world, Emaar aims to provide world-class design and unrivalled products in the most desirable locations. The Group's portfolio consists of large-scale integrated residential developments, shopping malls, hotels, entertainment, and leisure destinations. Some of Emaar's most iconic landmarks include Burj Khalifa, the world's tallest building.

Market Cap AED  
**51.8Bn**  
FY 2022

Net Profit AED  
**6.8Bn**  
FY 2022

Revenue AED  
**24.9Bn**  
As of Dec. 2022

Under Development  
**27,000**  
Residential Units

Presence in  
**+12**  
Global Markets

Delivered  
**85,000**  
Residential Units

\*As in 31 December 2022



# CEDAR

## CREEK BEACH

For more information please call 800 36227 (UAE) / +971 4 366 1688 (International)  
or talk to our Property Advisor directly at +971 4888 8844 from 9 AM to 7 PM (GST), Monday to Friday.  
Visit our online sales centre at [emaar.com](http://emaar.com) or any of our Sales Centres across the UAE.

### DUBAI

Emaar Sales Centre | Next to Souq Al Bahar, Downtown Dubai

9:30 AM to 10 PM, Sunday - Friday

9:30 AM to 7 PM, Saturday

Dubai Hills Estate Sales Pavilion | Umm Suqeim Road

Dubai Creek Harbour Sales Pavilion | Ras Al Khor

From 9:30 AM to 7 PM, Sunday - Saturday

### ABU DHABI

Emaar Sales Centre | Al Nahda Tower, Ground Floor, 4th Street, Corniche, Al Muroor Road

From 9:30 AM to 7 PM, Sunday - Friday

# EMAAR